

CATALINA

Banner Edition

SPECIAL EDITION
PRODUCT OFFER





Coachmen

Leader to the Great Outdoors.

"Coachmen RV... Great Product, Great Price, Great Camping"



Shown with optional TV



Unbelievable kitchen storage!!



323BHDS with Truffle decor (Back to front view)
(Reversible refrigerator insert set to black)

323BHDS

The Catalina 323BHDS is one of our top selling family floorplans. This slideout travel trailer floorplan sleeps 9-10 comfortably. Have a big family? This is the floorplan for you, the 323BHDS is available with an optional full size camp kitchen that includes a refrigerator, camp stove, overhead cabinets, silverware and utility drawers and the hot and cold water at the sink drains into it's own 30 gallon holding tank. This is a great way to feed the hungry troops while keeping the mess outside.



Shown with optional loft and entertainment center

323BHDS Bunk area



**323BHDS Optional Full-Size Camp Kitchen (Standard 303KDS)
(Also available on the 283RBKS, 333BHKS)**



323BHDS Bedroom with quilted comforter, two mirrored shirt closets, overhead cabinets and two night stands



Bunk house entertainment center and storage (TV not included)

283RBKS

This is our entertainers floorplan. This floorplan offers the best of both worlds, abundant kitchen storage and a large bathroom space in an easily towable unit. The 283RBKS is also one of our select floorplans that includes a Fireplace/Entertainment Center STANDARD and is available with an optional full size camp kitchen.



Shown with optional TV

283RBKS with Camel decor (Back to front view)



*283RBKS Kitchen
(Reversible refrigerator insert set to Grace Cherry)*



Large bathroom featuring abundant storage

293QBCK

Catalina's 293QBCK is designed to sleep 7-9 comfortably, the triple bunk coa-cube bedroom is a great sleeping /entertainment area. The **STANDARD** pull out camp kitchen includes a pull out countertop, mini fridge, camp stove and sink with hot and cold water.



Shown with optional TV

293QBCK with Fawn decor (Back to front view)



293QBCK Bunk room



Pull out camp kitchen (STANDARD on 293QBCK, OPTIONAL on 273BH, 273DBS, 323BHDS)



333RETS with Camel decor (Front to back view)



STANDARD fireplace/entertainment center in the bedroom, the bedroom also features a large wardrobe with 2 sliding doors.

333RETS

The 333RETS is a rear living couples coach. This unique layout includes a more functional living room with the entertainment center closer to the seating, it also features numerous windows that let in an abundance of natural light. The corner kitchen design offers more countertop space than similar competitive floorplans.

Beauty and Benefits

In every Coachmen Catalina quality is evident. We go above and beyond to offer features and benefits designed with the traveling camper in mind. Our superior benefits are a combination of practical features and construction practices that give our customers a coach that will last. It's just another way Coachmen proves we are "The Leader to the Great Outdoors".



Shown with our New Power Electric Awning with Wall Mounted LED Lights.



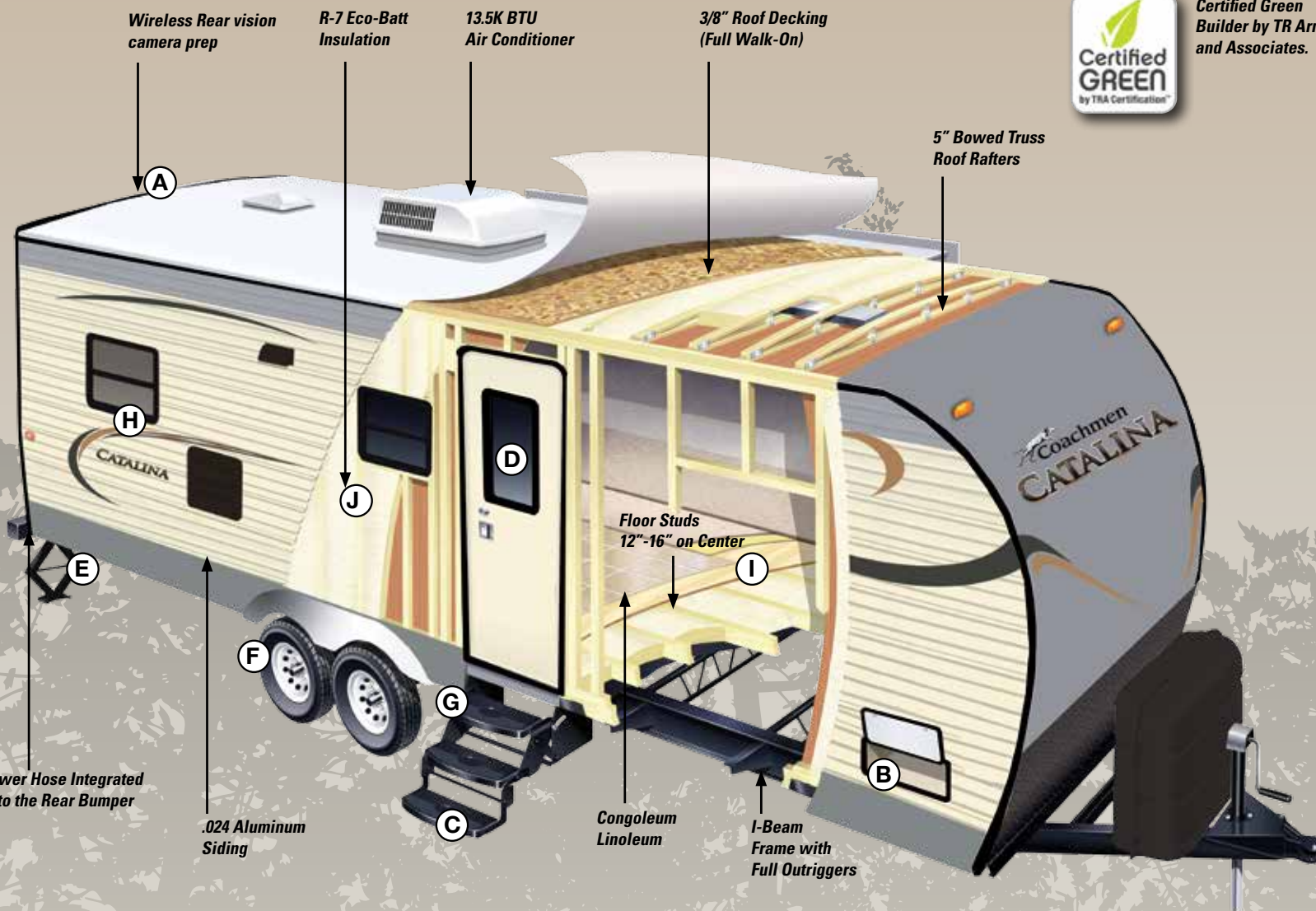
1. Thermofoil countertops (not T-mold or self edge)
2. High rise faucet with 60/40 sink
3. Three burner range (stainless steel oven optional)
4. Full extension ball bearing metal drawer guides
5. In-floor ducted heat (N/A 213BH)
6. Grace Cherry stained wood cabinetry
7. 81" Interior height
8. Decorative glass inserts on cabinet fronts

9. Roof ducted A/C (optional)
10. Fireplace (STANDARD 243RBS, 283RBKS, 293RKS, 293RLDS, 303RLS, 323BHDS, 323TSQB, 333RETS(2), 343QBDS)
11. Venetian style mini blinds
12. Congoleum linoleum with 3 yr. cold crack warranty
13. Reversible refer insert (Grace Cherry or Black)
14. Under booth dinette storage (per floorplan)

15. AM/FM/CD Radio MP3/iPod, (DVD player optional)
16. Thermofoil dinette table
17. Overhead cabinet storage with gas strut lift assist
18. Residential style carpet
19. High rise radius corner cushion on u-shape dinettes
20. Sofa bolsters on Jackknife sofas
21. Solid bedroom privacy door (most floorplans)



Certified Green
Builder by TR Arnold
and Associates.



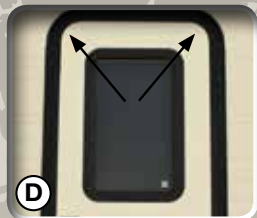
Wireless Rear vision camera prep
(Camera not included)



Exterior pass thru storage



Radius triple entry step
(Double non slide models)



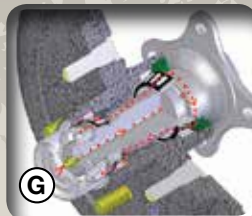
Smooth fiberglass radius
entry door with painted finish



Four (4) stabilizer jacks
Standard on all models
(Most competitors offer this as an
option not a standard)



Catalina's exclusive tire and rim package
includes: radial tires, polished aluminum
fender skirts and e-coat
maintenance free rims



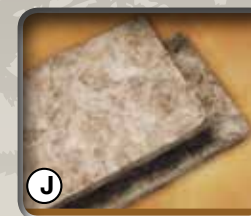
Superlube™ axles for fast
and easy lubrication



G20 rated tinted black framed
windows with safety glass



5/8" Tongue in groove plywood decking
glued and stapled to the
floor studs-not osb



Full 6 sided R-7 eco-batt
insulation. This is a new and
sustainable technology

SUPERIOR BENEFITS



Thermofoil Countertop Benefits:

- **Pull Test**—It pulls at 450-500 PSI It will pull the core apart before the Thermofoil gives.
- **Cold cracks**-Will not cold crack like a T- mold Edge or Self-Edge.
- **Moisture Exposure**-It will withstand moisture better than T-mold Edge or Self-Edge because it is sealed so that no water can penetrate.



The floor is the base and key component of your RV. Therefore, we refuse to build anything but the best. Beginning with building the frame on 12"-16" centers, and bolting as well as gluing the 5/8" tongue and groove plywood, our methods and materials set us apart from the competition.



A pressurized LP line test ensures that your unit is safe and all LP gas components are in working order.



We check ALL of our coaches for water leaks by pressurizing the unit and then using a Seal-Tech spray on every part of the unit to identify any problem areas.

Our full radius smooth metal front end creates a more aerodynamic unit providing:

- Better airflow
- Better towability
- Improved fuel costs
- Easy to clean



A thorough electrical check makes sure that all electrical components are in working order, and that no electrical connections have been compromised during construction.



All of our craftsman are thoroughly trained to use a framing table with jigs and clamps. This ensures that the cabinets are built to extremely tight tolerances for tight and secure cabinetry that will last for years.



Our standard 6 gallon gas/electric DSI water heater allows you to fire up your water heater quickly and easily from inside your Catalina. It also features a great quick recovery feature which allows you to heat up to 16.2 gallons of hot water per hour. So whether you are washing the dishes or taking a shower, you'll always have plenty of hot water.

STANDARD AND OPTIONAL FEATURES

Exterior Standard Features

- Cambered structural steel I-Beam frame (with full width out riggers)
- 3/8" Fully decked walk-on roof
- Residential in-floor ducted heat (N/A- 213BH, 223FB, 273BH)
- One-piece seamless walkable roof
- Radius entry steps
- 5/8" Tongue & groove plywood floor decking
- R-7 fiberglass insulation in sidewalls, roof & floor
- Silver E-coat maintenance free wheels
- G-20 tinted windows
- Rain gutters with extended molded downspouts
- Pearl 024" Aluminum exterior skin with .030 skirt metal
- Painted bumper w/drain hose carrier and end caps
- Radius-cornered fiberglass entrance door
- Roto-cast holding tanks
- Flush mount baggage doors that are lockable and radius cornered
- Polished aluminum fender skirts
- Self-adjusting brakes
- 110V G.F.C.I. protected exterior receptacle
- 30-Amp electrical service w/deluxe 110v 45-Amp power converter
- City water hook-up

Interior Standard Features

- Large pot & pan drawer
- Under-bed storage, bed lifts easily on 2 gas struts
- 2 Shirt closets with mirrors
- Fireplace at the base of the entertainment center (STANDARD 243RBS, 283RBKS, 293RKS, 293RLDS 303RLS, 323BHDS, 323TSQB, 343QBDS)
- STANDARD Fireplace at the base of the entertainment center and in the bedroom (333RETS only)
- AM/FM radio with CD player, iPod and MP3 dock
- Residential in-floor ducted heat (N/A- 213BH)
- Cable/TV hook-up in front bedroom (N/A- 213BH)
- 81" Living room ceiling height
- 2 full-length night stands w/ recepts

- Congoleum linoleum flooring
- 30K BTU auto-ignition furnace with wall thermostat (20K BTU 213BH)
- Grace Cherry stained wood cabinets
- 12V demand water pump
- Decorative glass in living room cabinets
- Systems monitor panel
- Jack knife convertible sofa with bolster cushions
- Shower curtain with curved shower track
- Neo-angle shower with glass doors (STANDARD 243RBS, 253RKS, 263RLS, 283RBKS, 293RKS, 293RLDS, 303RLS, 333BHKS, 333RETS, 343QBDS)
- Hard valance window treatment with lambrequin
- Large dinette tabletop with marine grade pedestal
- Marine toilet with foot flush
- Full size medicine cabinet w/ mirror
- Bathroom exhaust fan
- Single piece thermofoil kitchen countertop with seamless edge
- Double door refer w/ reversible insert
- High rise faucet w/ large 60/40 double bowl sink
- Gas/electric double door refer
- 3-Burner range w/ 9,000 BTU Superburner™
- Screwed and glued cabinet construction with pocket board solid lumber core stiles
- Easy-View extra large picture window at dinette
- Silverware drawer
- Solid bedroom and bunk room doors (per floorplan)
- Radius corner interior walls (where applicable)

Customer Premier Package (Mandatory Option)

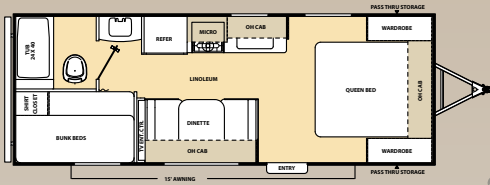
- 13.5K BTU A/C
- 6 gallon gas/electric DSI water heater
- Metal drawer guides in kitchen
- Radial tires
- Superlube™ axles
- ABS tub/shower surround
- 20lb. LP bottles w/ ABS cover
- Decorative backsplash in kitchen
- Microwave
- Patio awning with LED backlight
- Aluminum fender skirts
- Residential quilted bedspread

- Stab jacks (4)
- Water heater by-pass winterization kit
- Continu·us™ TV antenna with RG-6 coax cabling and satellite prep

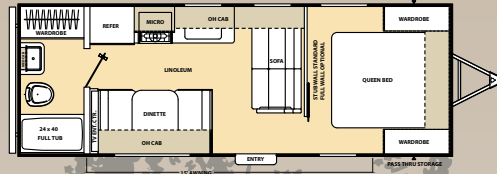
Additional Options

- Power pack (power awning & power tongue jack)
- 32" flat screen TV
- Enclosed and heated underbelly (NA - 213BH, 223FB, 273BH)
- 13.5K BTU ducted A/C
- 15K BTU ducted A/C
- Multi Media Sound System with CD/DVD player, iPod and MP3 docking
- Swing arm TV bracket
- 50 Amp service with second A/C prep (293QBCK, 293RLDS, 303KDS, 303BHS, 323BHDS, 323TSQB, 333BHKS, 333RETS, 343QBDS)
- 50 Amp service with second A/C (293QBCK, 293RLDS 303KDS, 303BHS, 323BHDS, 323TSQB, 333BHKS, 333RETS, 343QBDS)
- Free standing table w/ 4 chairs (N/A U-shaped dinette models STANDARD 293RLDS, 333RETS)
- Stainless steel range with oven IPO 3 burner cooktop
- Hide-a-bed sofa (N/A- 253RKS, 273BH) (STANDARD 283RBKS, 293RLDS, 333RETS)
- Kitchen sink covers
- Outside shower
- Bar stools (Recommended-243RBS, 293DDS)
- Skylight above tub/shower
- Spare tire w/tire carrier & cover
- Outside marine-grade speaker
- Full size exterior camp kitchen (283RBKS, 323BHDS, 333BHKS) (STANDARD 303KDS)
- Pull out camp kitchen (273BH, 273DBS) (STANDARD 293QBCK)
- Front diamond plate (mandatory)
- Full wall w/pocket door (Available on 223BH, 273BH)
- Two (2) 30 Lbs. LP tanks with ABS cover
- Rear vision camera prep (mandatory option)

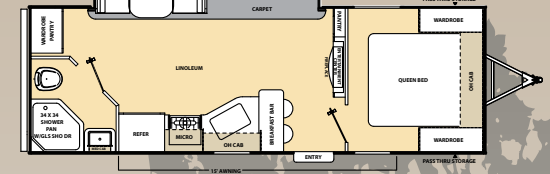
213BH



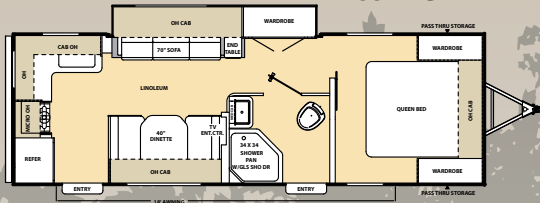
223FB



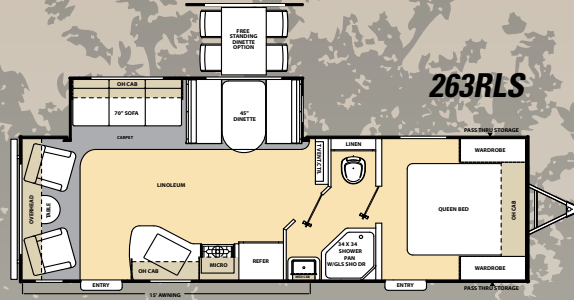
243RBS



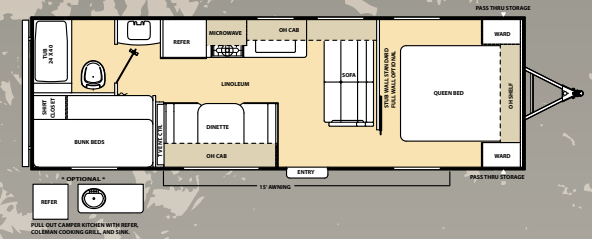
253RKS



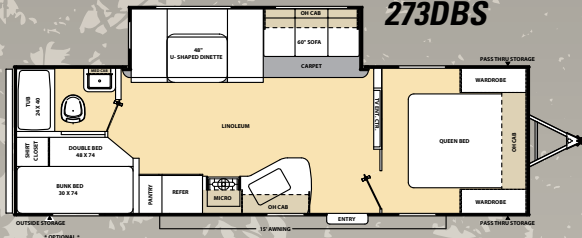
263RLS



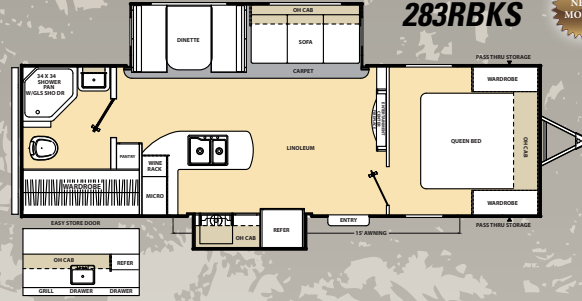
273BH



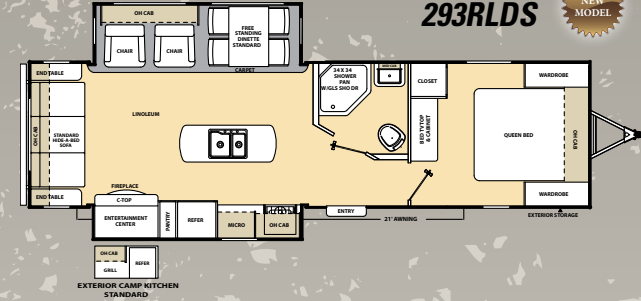
273DBS



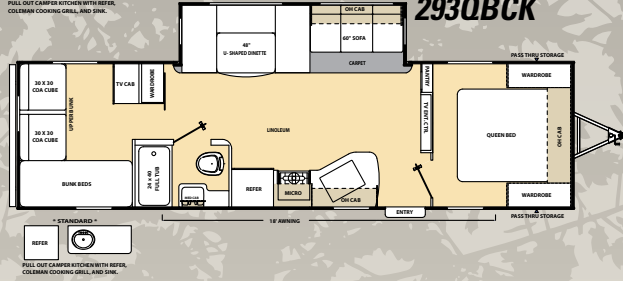
283RBKS



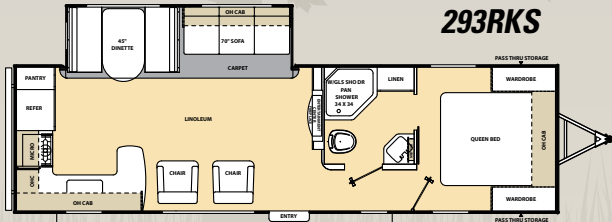
293RLDS



293QBCK

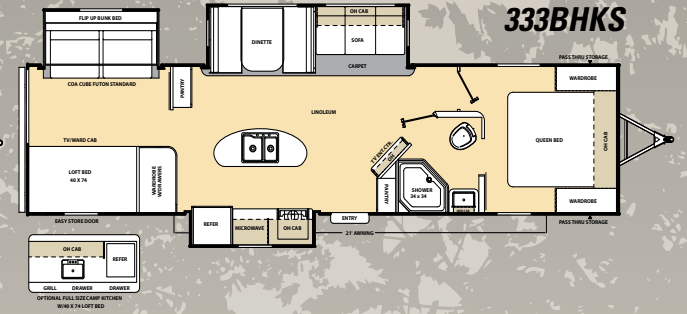
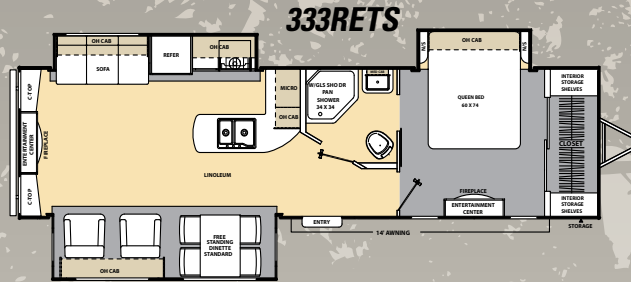
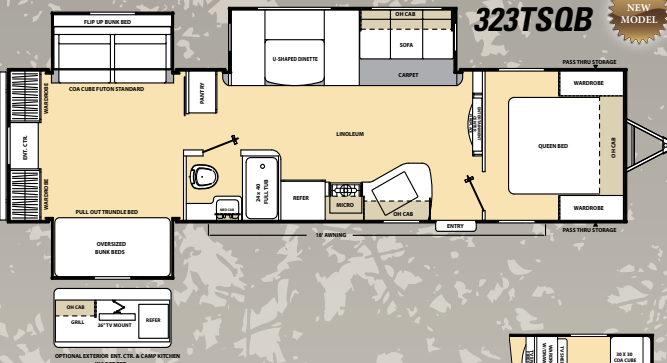
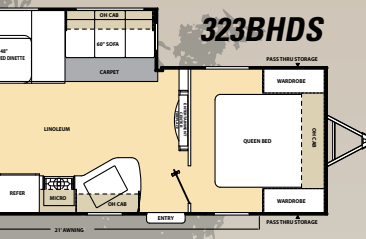
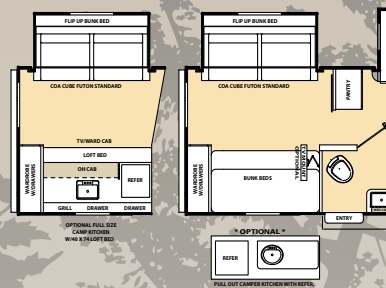
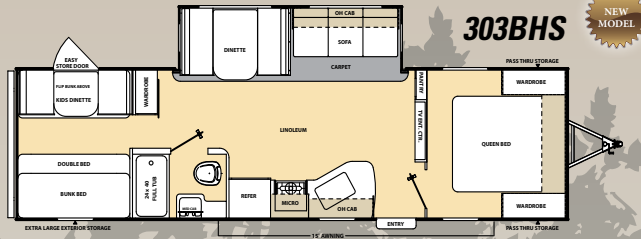
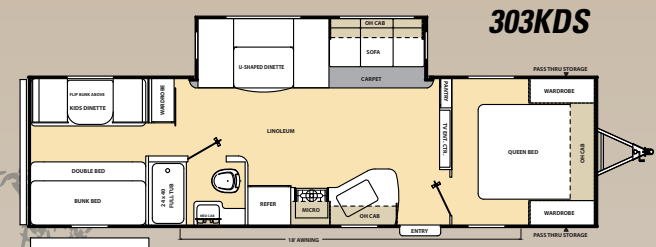
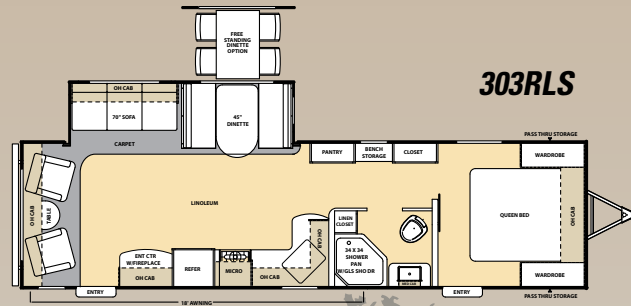
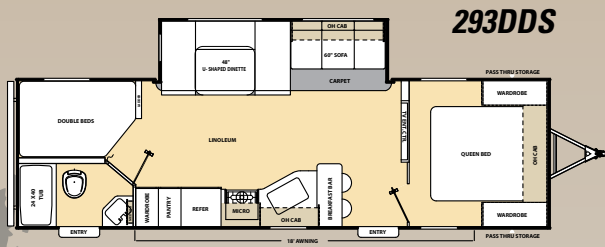


293RKS



MODEL	213BH	223FB	243RBS	253RKS	263RLS	273BH	273DBS	283RBKS	293RLDS	293QBCK	293RKS
Shipping Weight	4,246	4,262	5,702	5,442	6,052	4,688	6,138	6,660	7,230	6,760	6,553
Carrying Capacity	2,754	2,738	1,898	2,058	1,648	2,312	1,562	2,340	2,270	2,740	2,647
GVWR	7,000	7,000	7,600	7,500	7,700	7,000	7,700	9,000	9,500	9,500	9,200
Hitch Weight	462	564	687	690	718	541	738	760	911	810	788
Exterior Height (with A/C)	10' 7"	10' 7"	11' 1"	10' 7"	11' 1"	10' 7"	11' 1"	11' 1"	11' 1"	11' 1"	11' 1"
Fresh Water Capacity (gal.)	46	46	46	46	46	46	46	46	46	46	46
Grey Water Capacity (gal.)	40	40	40	40	40	40	40	40*	40	40	70
Waste Water Capacity (gal.)	30	30	30	30	30	30	30	30	30	30	30
Awning Length	15'	15'	15'	18'	15'	15'	15'	15'	21'	18'	18'
Wheel Size	14"	14"	15"	14"	15"	14"	15"	15"	15"	15"	15"
Exterior Length	25' 8"	26' 2"	27' 11"	28' 4"	29' 10"	29' 3"	30' 3"	30' 6"	33' 9"	33' 5"	32' 6"
Exterior Width	96"	96"	96"	96"	96"	96"	96"	96"	96"	96"	96"
Interior Height (Coach)	81"	81"	81"	81"	81"	81"	81"	81"	81"	81"	81"
Axles	3500 lbs.	3500 lbs.	3500 lbs.	3500 lbs.	3500 lbs.	3500 lbs.	3500 lbs.	4400 lbs.	4400 lbs.	4400 lbs.	4400 lbs.

*70 with camp kitchen



MODEL	293DDS	303RLS	303KDS	303BHS	323BHDS	323TSQB	333RETS	333BHKS	343QBDS
Shipping Weight	6,345	6,710	6,440	6,407	7,690***	8,190	7,980	8,230	6,970
Carrying Capacity	1,455	2,790	2,560	2,534	1,810	2,410	2,520	2,570	2,471
GVWR	7,800	9,500	9,000	9,000	9,500	10,900	10,500	10,800	9,500
Hitch Weight	805	720	870	935	790	990	800	900	860
Exterior Height (with A/C)	11' 1"	11' 1"	11' 1"	11' 1"	11' 1"	11' 3"	11' 1"	11' 1"	11' 1"
Fresh Water Capacity (gal.)	46	46	46	44	46	46	46	46	44
Grey Water Capacity (gal.)	40	40	40*	40	40*	40	40	80**	40
Waste Water Capacity (gal.)	30	30	30	30	30	30	30	30	30
Awning Length	18'	18'	18'	15'	21'	18'	14'	21'	18'
Wheel Size	15"	15"	15"	15"	15"	15"	15"	15"	15"
Exterior Length	31' 7"	33' 11"	33' 5"	33' 5"	35' 10"	36' 4"	35' 10"	36' 9"	35' 8"
Exterior Width	96"	96"	96"	94"	96"	96"	96"	96"	96"
Interior Height (Coach)	81"	81"	81"	81"	81"	81"	81"	81"	81"
Axles	3500 lbs.	4400 lbs.	4400 lbs.	4400 lbs.	4400 lbs.	5000 lbs.	5000 lbs.	5000 lbs.	4400 lbs.

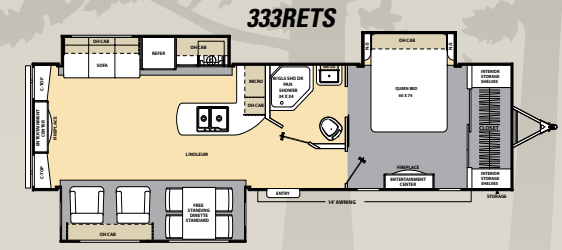
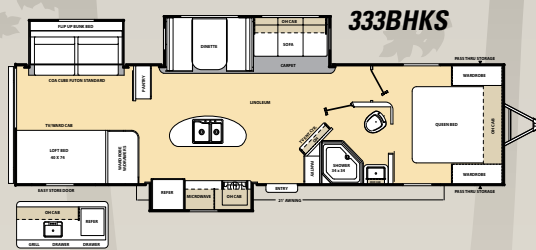
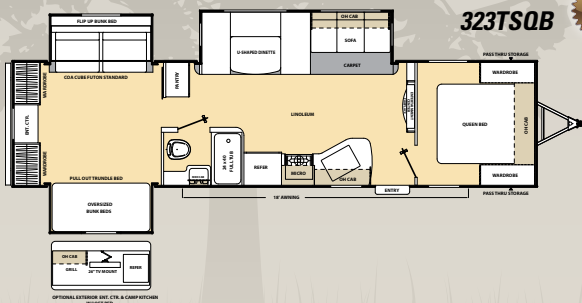
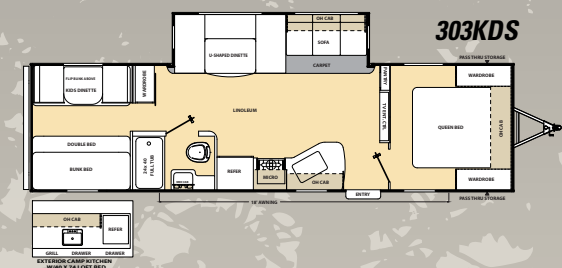
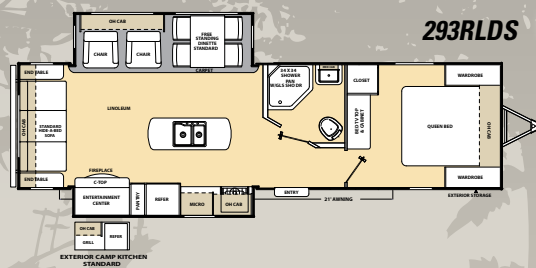
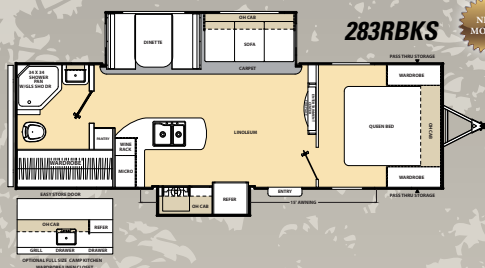
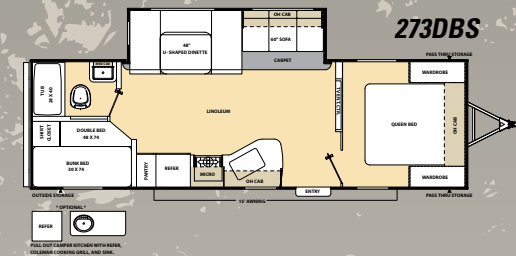
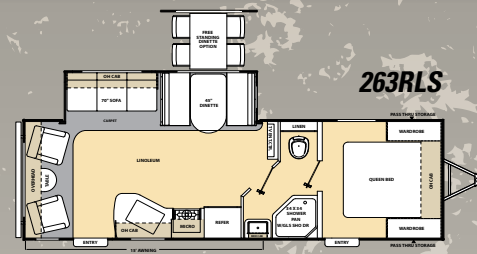
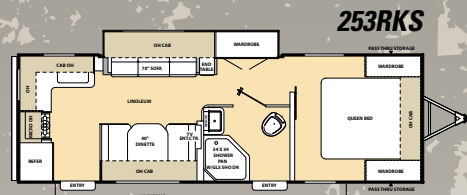
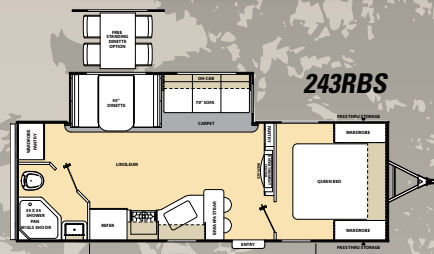
*70 with camp kitchen **110 with camp kitchen *** Shipping weight includes full size camp kitchen

Banner Edition

A Proud History of Quality and Value..... A Brand That You Can Trust!

Coachmen RV products have been on the US roads and highways since 1964. The first Coachmen RV products were manufactured in a 5,000 square foot plant in downtown Middlebury, Indiana. Coachmen's first year of production included 12 travel trailers, a single truck camper, and 80 truck caps. Since that time, over 600,000 Coachmen Recreational Vehicles have been produced.

2014 has been a Banner Year here at Coachmen and YOU are the reason! Concluding the celebration of Coachmen's 50th Anniversary, Catalina would like to reward our outstanding Dealers and Customers for their continued business! There is no better way to reward you than with the Banner Edition Package! Our Banner Edition Package will only be offered in the 9 select floor plans below. All of our best options have been combined into a **FREE** Banner Edition Package. At Coachmen Catalina, we overtly express our gratitude to those who have already become a part of the Coachmen Family and warmly welcome those future campers that choose Coachmen Products. Thank you for your business!



See Specification tables on previous pages for more information.



Banner Edition

PACKAGE

Qualifying units will be clearly marked with Banner Edition decals and a date of manufacture on or after September 1, 2014. (Limited time offer.)



FREE

**Power Electric Awning with
Wall Mounted LED Lights**



FREE

**Power Tongue Jack with
LED Hitch Light**



FREE

**Multi Media Sound System
w/ DVD and CD radio w/USB**



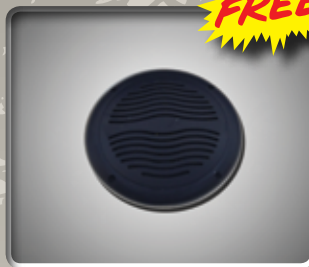
FREE

32" Flat Screen TV



FREE

Swing Arm TV bracket



FREE

**Marine Grade Exterior
Speakers**



FREE

**Stainless Steel Range with
Oven IPO 3 Burner Cooktop**



FREE

**Outside Shower with
Hot and Cold Controls**



FREE

**Front Diamond Plate
Stone Guard**



FREE

**Rear Vision Camera Prep
(Camera sold separately)**



FREE

TRA GOLD Certification





FREE ONE YEAR MEMBERSHIP

Big benefits for new owners

Coachmen is proud to sponsor the largest manufacturer sponsored camping club in North America ... Coachmen Owners' Association (COA). COA provides a broad breadth of value propositions for our owners including: planned trips/ tours and rallies at bulk rate discounts, free trip routing, free campground directory, free Easy RVing magazine, theme park discounts, fuel discounts, mail forwarding, a dedicated COA web site, local and state club activities and Caravan Chapter membership opportunities. Most importantly, COA enhances the Coachmen ownership and RV lifestyle experience. Every new Coachmen RV buyer is eligible for a 1 Year **FREE** membership in the Coachmen Owners' Association. It all adds up to an easy ownership experience!

Travel Easy™ Roadside Assistance

RVing is easier with Coachmen's Travel Easy™ Roadside Assistance provided **FREE** the first year of ownership to those who purchase a New Coachmen RV. Administered by Coach-Net, this service provides you with 24/7 operational, technical and emergency road service coverage. Also included is towing, fuel delivery, jump starts, lockout service, tire changes, mobile mechanic and unlimited technical assistance. Anywhere. Anytime. Travel Easy™ is the security of knowing that help is an easy phone call away.



All information contained in this brochure is believed to be accurate at the time of publication. However, during the model year, it may be necessary to make revisions and Coachmen reserves the right to make all such changes without notice, including prices, colors, materials, equipment and specifications as well as the addition of new models and the discontinuance of models shown in this brochure. Therefore, please consult with your Coachmen dealer and confirm the existence of any materials, design or specifications that are material to your purchase decision.

To learn more about Coachmen RV and our products and see how Coachmen is leading the great outdoors, visit www.coachmenrv.com



Coachmen

Leader to the Great Outdoors.

Coachmen RV
Catalina Division
423 N. Main St./P.O. Box 30
Middlebury, IN 46540



Learn More
Scan this barcode using a QR Reader on your smart phone to learn more about Forest River.



A Berkshire Hathaway company.



Forest River, Inc. encourages our customers to purchase their Forest River products from a local dealership whenever possible for the following reasons:

It is the goal of Forest River, Inc. that all of our RV owners fully enjoy the RV experience and that customer satisfaction meets or exceeds their expectations!

- 1) Forest River, Inc. dealers are independently owned and operated businesses so priority service and scheduling is at their discretion and is often provided to customers that purchased their unit at that dealership.
- 2) Purchasing locally allows customers to establish meaningful relationships with a dealer, enhancing the RV experience through assistance with product questions, user tips or RV regulations for your state or country, and much more!
- 3) Canadian customers must meet requirements to bring an RV purchased out of the country to their home. These requirements may involve additional inspections and certifications, taxes and fees. Your local Canadian Dealer is a professional at meeting these requirements.
- 4) Scheduling timely warranty repairs and adjustments through a local dealership provides far greater flexibility and convenience to you, the customer!

YOUR CATALINA DEALER



© Copyright Coachmen RV, a Division of Forest River Inc.,
A Berkshire Hathaway company. All Rights Reserved