

**SONY**  
make.believe



**TRILUMINOS**  
DISPLAY

---

the most magical colour experience

---



October - November' 2013

**BE MOVED BRAVIA**

# The most magical color experience.



You must have seen colors. But have you seen the richest, most gorgeous, simply incredible and absolutely spectacular colours? Now is the time.

We bring you a world made up of truly magical colours – the world of Triluminos. Experience Sony’s latest revolution in technology that adds infinite shades to every red, shows more blues than you’ve ever seen and displays hues of greens you’ve never imagined ever. They are the most wonderful, yet the most natural shades of colours.

Let this Festive season be filled with the magic of Triluminos colours.

BRAVIA

## INDEX

|                  |       |
|------------------|-------|
| Picture Quality  | 4-7   |
| 3D               | 8-9   |
| Sound            | 10-13 |
| Design           | 14-15 |
| Usability        | 16-19 |
| Comparison Chart | 20-21 |

|                     |       |
|---------------------|-------|
| Product Line-up     | 22-30 |
| Specification Chart | 31-33 |
| BRAVIA Accessories  | 34    |
| 4K Projector        | 35    |
| Home Theatre        | 36-43 |



# Picture Quality

Sony's TVs realize a power of colour and clarity that brings your picture to life, delivering a truly immersive experience. With four times the visual information of full HDTV, forget time and become part of a new world. The flowers' abundant reds, rolling green meadow, deep emerald seas; seemingly impossible colours right there in front of your eyes.



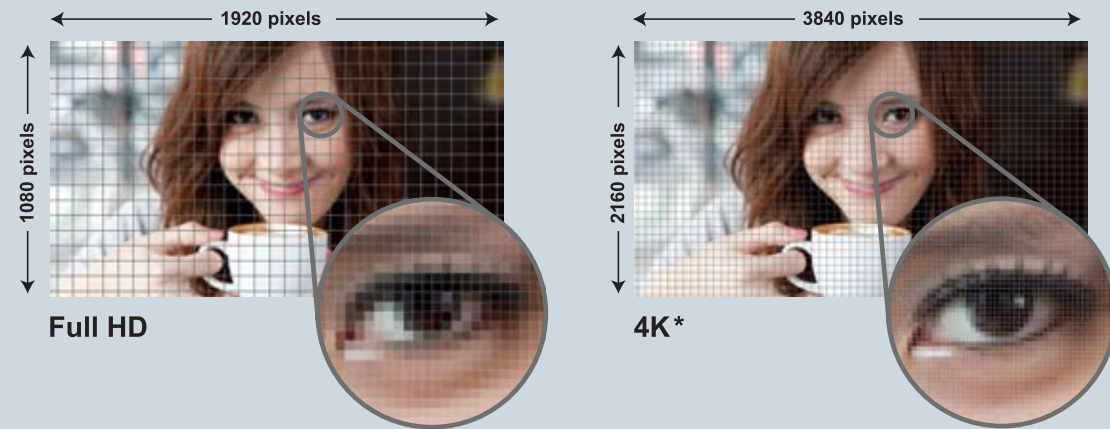
**4K**\*

\*4K = 3840 x 2160 pixels

## Witness a revolution in resolution

4K\*

It's time to take your viewing into a brand new era. The 4K\* LED screen contains no less than 8 million individual pixels (3,840 x 2,160 pixels). That's four times more detail than your Full HD TV. Advanced picture processing ensures that every one of those pixels displays images with superb quality. Look closely: it's just like seeing real life.



X9004  
SERIES

## Stunning 4K\* TV picture quality, whatever you're watching

4K X-Reality PRO

Experience stunning picture quality, whether you're watching 4K\* video or low-resolution smartphone clips. Enjoy all your favourite content in 4K\* – from Blu-ray Disc and TV broadcasts to web videos. Sony's latest generation processing engine analyses, cleans and refines images, restoring beautiful results from any source with more natural detail, richer colours and high contrast.

The 4K\* X-Reality™ PRO engine upscales any standard definition content to 4K\* quality & deliver images which you've never seen before. The latest Reality Creation database and Super Resolution processing optimizes images for incredible detail & sharpness, so whatever may be the input, you see everything in 4K\*.



\*4K = 3840 x 2160 pixels

X9004  
SERIES

## The best quality ever, from any picture source

X-Reality PRO

With Sony's most advanced image processing engine to date, you can now enjoy remarkably clean, vivid and lifelike images whether you're watching dazzling 1080p Blu-ray Disc™ movies or low-resolution web video. Sony's phenomenal X-Reality™ PRO Engine analyses each scene pixel-by-pixel and uses sophisticated pattern matching to optimise the picture, ensuring you always get the best images possible.



W950 SERIES W900 SERIES W850 SERIES W700 SERIES W670 SERIES W650 SERIES W600 SERIES

## Best ever colour that's never been more real

TRILUMINOS  
DISPLAY

TRILUMINOS™ Display creates incredibly true, natural shades of colours – just the way you want to see them. Hard-to-reproduce reds and emerald greens are displayed beautifully, so landscapes and seascapes look more vivid, richer and more intense. Faces look better, too, with satisfyingly natural skin tones. It's all thanks to a new-generation TV panel that makes colours purer and more distinct, giving images a heightened sense of depth.



TRILUMINOS™ Display enriches your viewing with a wider palette of rich, natural colours. Unique to Sony, this new-generation backlight technology expands the range of colours BRAVIA can display compared with normal TVs. Compared with ordinary displays, reds are more vivid and life-like, hard-to-reproduce greens and blues look more natural. You will see faint differences of colour on BRAVIA with TRILUMINOS™ Display.

### Comparison between TRILUMINOS™ Display and White LED in relative colour



Conventional  
White LED

A narrower colour space can be compared to having fewer colour pencils with which to draw



TRILUMINOS  
DISPLAY

A wider colour space can be compared to having more colour pencils with which to draw

GREEN

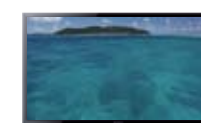


Conventional White LED



TRILUMINOS  
DISPLAY

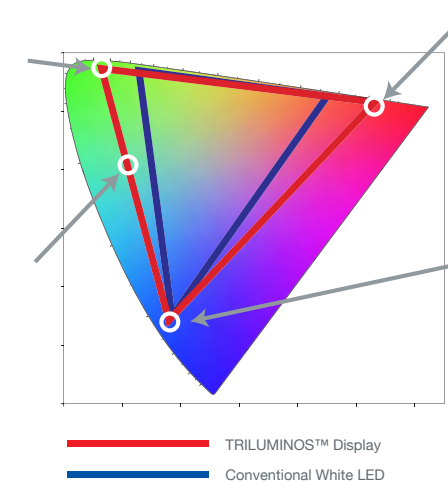
EMERALD GREEN



Conventional White LED



TRILUMINOS  
DISPLAY



RED



Conventional White LED



TRILUMINOS  
DISPLAY

BLUE



Conventional White LED



TRILUMINOS  
DISPLAY

X9004 SERIES W950 SERIES W900 SERIES W850 SERIES



# 3D Brilliance



## Your most immersive rewarding 3D experience

BRAVIA lets you enjoy an immersive, life-like 3D viewing experience. Watch 3D movies on Blu-ray Disc, plus a growing choice of 3D TV broadcasts and 3D web videos, with finely detailed 3D images that enable you to feel a natural depth of field.

Slip on the latest generation of light, comfortable 3D glasses to enjoy your favourite 3D content – and let all the family share the experience with a great view of the action.

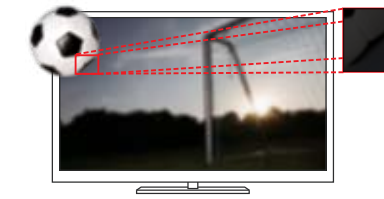
X9004 SERIES W950 SERIES W900 SERIES W850 SERIES



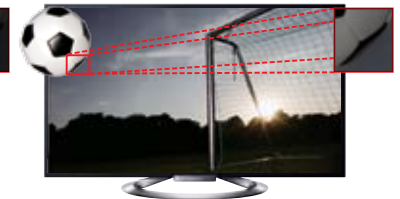
## Full High Definition in 3D

1920 x 1080 Full HD 3D

3D BRAVIA displays Full HD frames alternately at a very high speed for both the left and right eye, effectively retaining its full resolution and image quality.



Passive 3D (Non Full HD 3D)



Frame Sequential Method  
Active 3D (Full HD 3D BRAVIA)

## 4x High Speed 3D Panel with Motionflow XR800/400

Motionflow XR 800 Motionflow XR 400 4x High Speed 3D Panel

Thanks to the 4x High Speed 3D panel and the motionflow technology, action appears precise and smooth as the camera pans to follow a kickoff or a long putt. Fast-action scenes remain fluid as images are inserted between frames. Even the quickest camera movements look natural with less judder and reduced blur.



Moving Pictures on other 3D TV's



Moving Pictures on Sony 3D BRAVIA

## 3D Super-Resolution

3D Super Resolution

Try not to flinch as a runaway train races straight into your living room. Ultra-realistic 3D effects are achieved by X-Reality™ PRO's 3D Super Resolution, optimizing each area of the 3D scene by drawing on its database of patterns, shapes and textures. It even sharpens objects as they approach the camera for maximum realism.



## Auto 3D Depth Adjustment

Auto 3D Depth Adjustment

Auto 3D Depth Adjustment precisely recreates the moment, making even 3D home movies look more natural. What's more, it reduces eye strain and enhances whatever you're watching — from 3D Blu-ray movies to web videos.



## Sony 3D Glasses

Enjoy watching high quality 3D content with new glasses. Light 3D glasses can be worn easily over your personal glasses



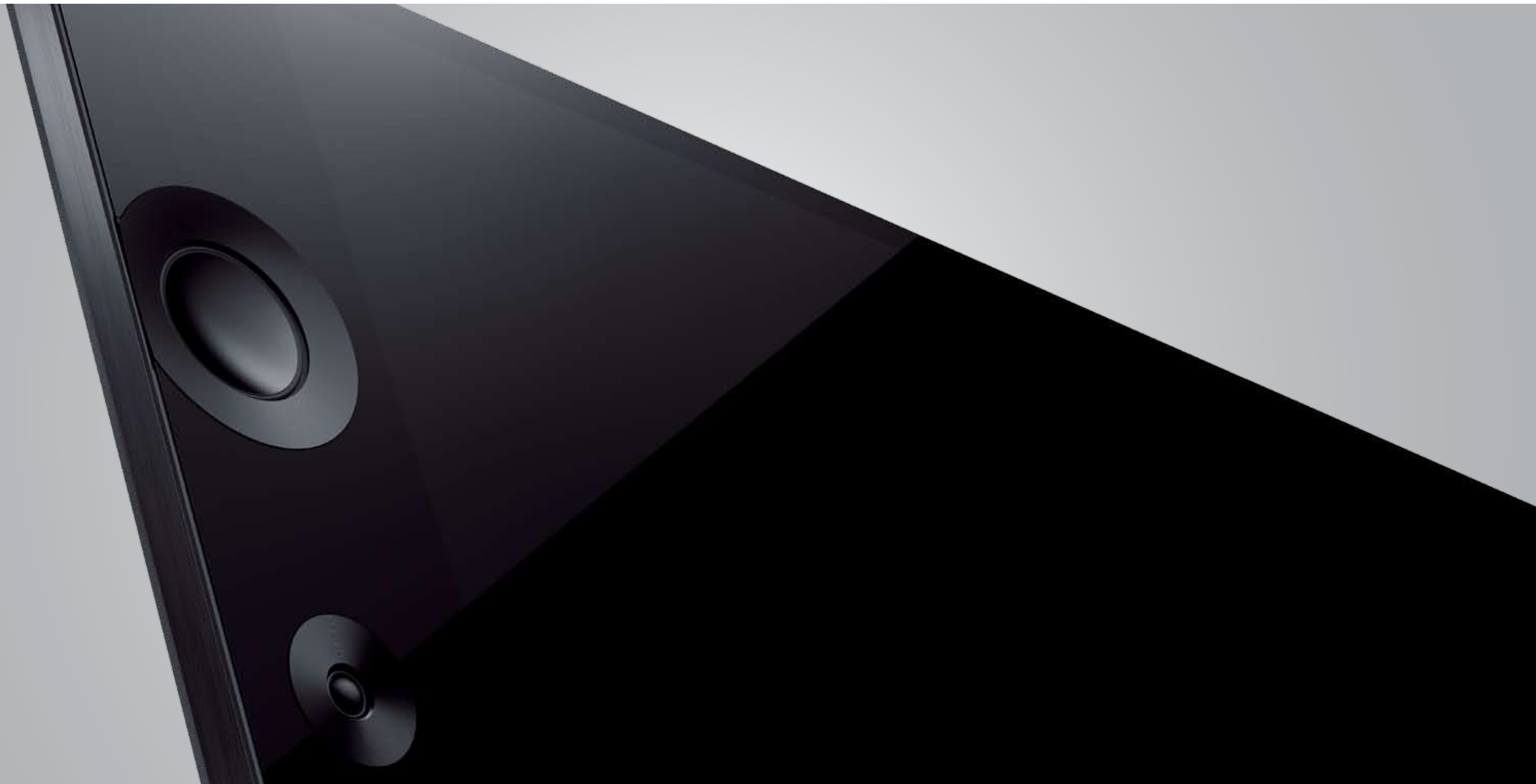
TDG-BT500A



TDG-500P

# Sound

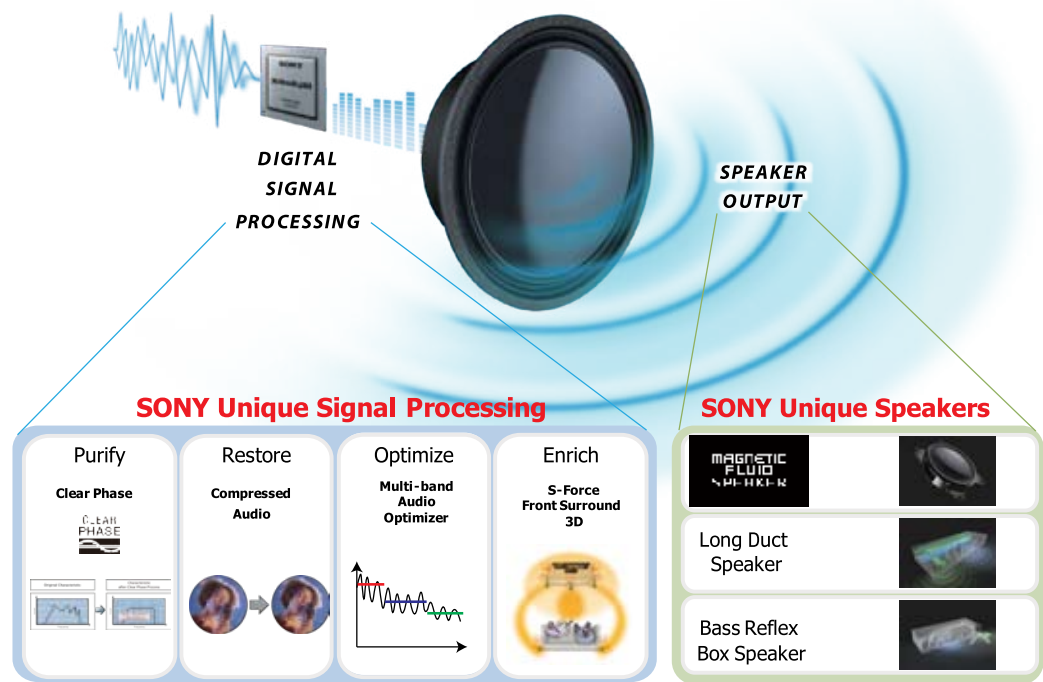
Sony's TVs deliver sound with soul shaking clarity that wraps you in a truly immersive experience. The clarity of each word, each breath, as though you're really there. And bass that you can feel through your body. Feel the air, the heat, and the excitement of actually being at that live performance or part of the stadium crowd.





# TV Sound innovation, the best sound for the best picture

Sony's Signal-to-Sound Architecture ensures clear, pristine audio that's always faithful to the original source. First, powerful digital processing technologies clarify, restore and optimise audio signals so that every detail's clear... even with tricky sources like heavily-compressed web video or poorly-dubbed movies. Then, Sony's unique speaker technologies reproduce sound with all the fidelity and realism you'd expect in the concert hall. From signal to final sound: everything's clearly better with Sony.



# Enjoy the most immersive sound

## Superlative sound from a Sony-unique speaker

Unique to Sony, Magnetic Fluid Speaker technology allows a thinner, more efficient loudspeaker that offers faithful reproduction of high-fidelity sound. Originally developed for the NASA space program, an advanced ferro magnetic fluid replaces the traditional damper in ordinary designs. This 'damperless' structure reduces signal losses, while reducing distortion for pure sound with crisp mids and highs. These are more efficient and are capable of delivering sound pressure levels higher than conventional speakers for the same power input – giving you more sound for less energy consumption.

X9004  
SERIES



MAGNETIC  
FLUID  
SPEAKER

## Great sound from an ultra-slim speaker

Enhance your TV experience with full-range sound. Crafted from high-quality materials, this compact bass reflex speaker delivers satisfyingly rich audio that belies its slender dimensions. You'll enjoy extended low frequencies and clear, sparkling highs – all from a slim-line bass reflex box that takes up less space inside the television cabinet.

W950  
SERIES

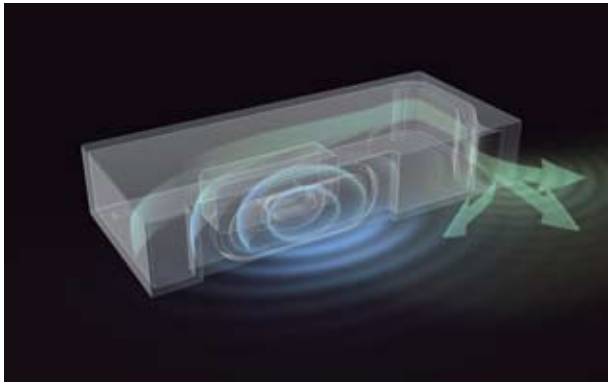
W850  
SERIES

W700  
SERIES

W670  
SERIES

W650  
SERIES

W600  
SERIES

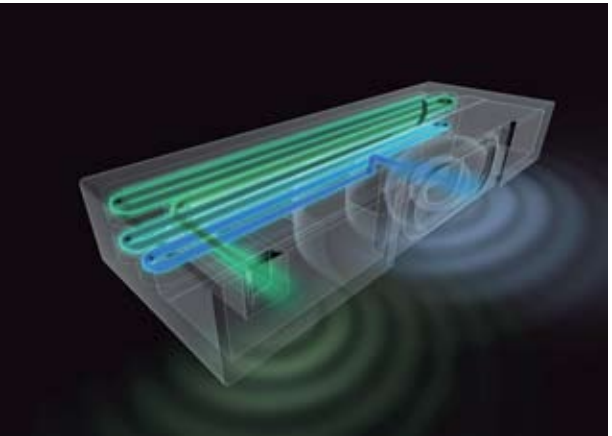


BASS REFLEX  
BOX SPEAKER

## Rich bass from a compact speaker

Rich, satisfying sound is a vital part of your BRAVIA entertainment experience. This newly-designed speaker reproduces rich, powerful bass and lower mid-range sounds, adding extra punch and depth to action movies, music and dialogue. The long 1.2m speaker duct is cleverly folded into a compact unit that's hidden neatly behind the TV screen's bezel.

W900  
SERIES



LONG DUCT  
SPEAKER



# Design

## Sense of Quartz

New vision for the ultimate clarity and experience. “Sense of Quartz” is the expression of essential value through genuine materials. A monolithic glass slate that appears to float over a ring-shaped base, their connection forming the intelligent core. The composition displays the distinctive silhouette of Sony BRAVIA.



## Illumination LED

BRAVIA is a symbol of convergence - lots of devices can be connected and various features are integrated, Illumination of intelligent core is associated with the convergence of them to BRAVIA. Colorful glow spreads radially around the intelligent core to represent TV status and other functions. Colour-coded bursts give reassuring on-screen confirmation of different actions - like setting the timer or making connection with other devices. It's a more stylish, elegant and distinctive way to get clear visual feedback from your TV.



## Monolithic Design

Frameless beauty only begins with the images it displays. Elegantly designed, this TV is constructed to be the center of your home entertainment. Every part of your television is beautiful.

Even when turned off, your BRAVIA captures the eye with its stylish flushed surface, giving the impression of the screen extending seamlessly to the very edge of the TV.



## OptiContrast Panel

OptiContrast panel helps boost contrast and brightness while minimizing unwanted light reflections. The OptiContrast panel also helps in establishing a dark background for rich, vibrant, high contrast pictures even in well lit rooms.



X9004  
SERIES

W950  
SERIES





# Usability

Sony's TVs realize a new level of usability, combining the capabilities of your hand-held devices with the excitement of the big screen.

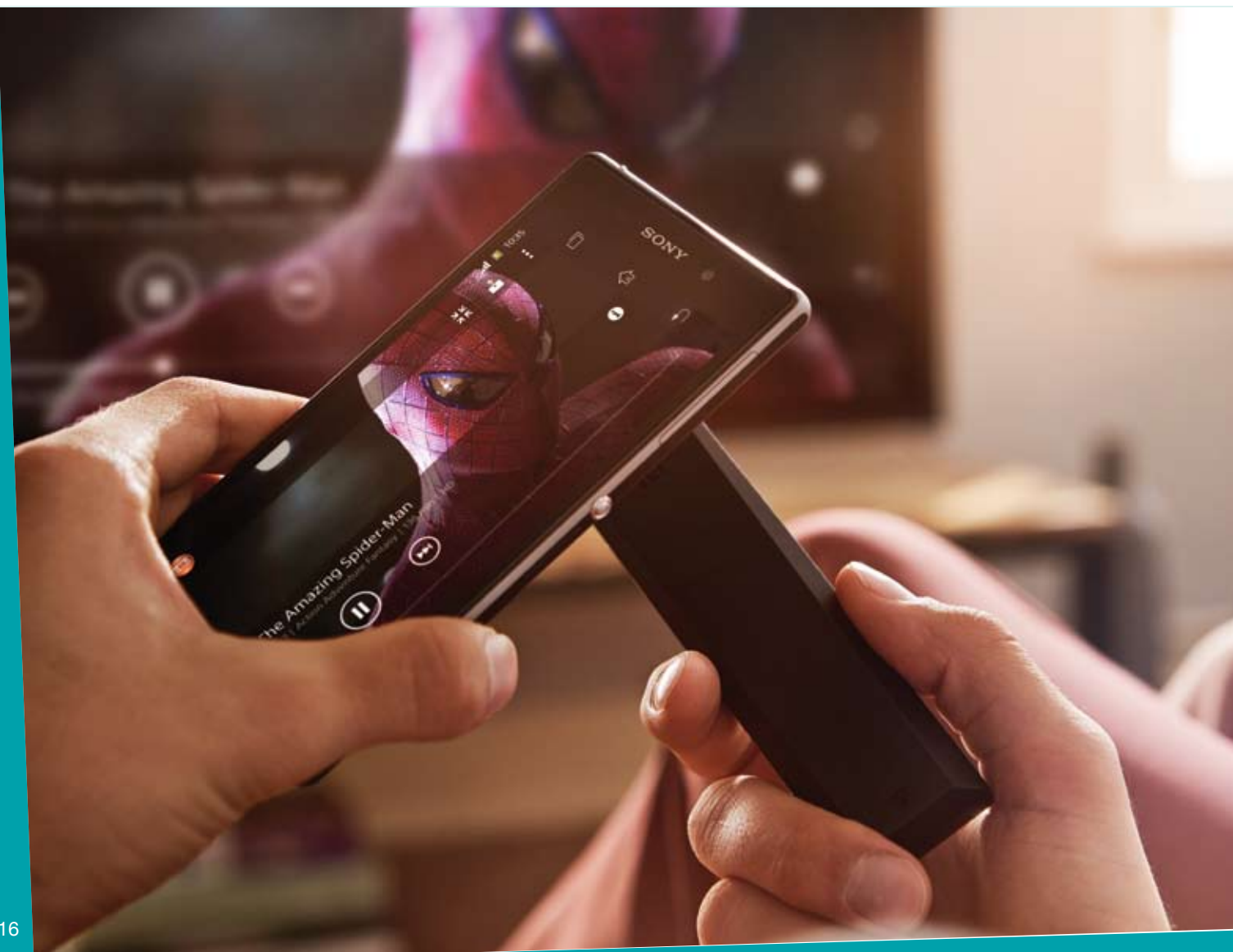
## See your smartphone's screen on BRAVIA at a single touch

All it takes is "One-touch". Briefly place your NFC-enabled Xperia™ smartphone close to the One-touch Remote Control & view exactly what's on your smartphone's screen super-size on BRAVIA. Videos, photos, apps, web pages and games all look great on TV, with sound reproduced loud and clear through the TV's speakers. No tricky set-up, no device pairing, no access point or internet connection required - it just works.

One-Touch Remote is bundled with X9004 & W950 series.

X9004 SERIES W950 SERIES W900 SERIES W850 SERIES W700 SERIES

Note: The video quality may be degraded due to environmental interference. Feature applicable with select Xperia™ models.



## See your smartphone's screen on TV, with no wires

See what's on your Android™ Smart Phone or Tablet Screen, super size on your BRAVIA TV. Screen mirroring connects your phone or tablet to the TV wirelessly, with no need to hunt around for connecting cables. You'll see exactly what's on your phone or tablet's screen displayed super-size on BRAVIA, with sound from the phone reproduced loud and clear through your TV's speakers. You can swipe or enlarge photos by touching phone or tablet's screen. Mirroring works with any Miracast™-compliant Android™ smartphone or tablet.

Screen mirroring



## TV that's made for your smartphone

Enjoy your phone's stored media and apps on TV with Smartphone Ready BRAVIA. Watch HD video clips and photos on the TV's big screen. Turn your living room into a disco and share MP3 music tracks through the TV's speakers. Just one slim cable links BRAVIA while charging your phone's battery as you view. You can even browse the content of your smartphone and interact with apps from the comfort of your couch using the TV remote.

MHL Mobile High-Definition Link



## Effortlessly control BRAVIA with your smartphone or tablet

TV SideView

Get more from watching television with TV SideView, your smarter TV companion. Just download the free TV sideview app and effortlessly control BRAVIA, while exploring great content from the comfort of a chair with your smartphone or tablet (Android™ or iOS). Easily browse and discover more content stored on other devices on your network. Make TV viewing more social by tweeting about the show from your mobile device.



## Let BRAVIA communicate in your regional language

BRAVIA's new on-screen interface lets you navigate in 11 Indian regional languages. Make a language selection and the TV communicates in your selected Language.

11 Indian Languages



## Discover a huge range of videos, music and apps



Enjoy Internet TV at its easiest and most intuitive. Touch the 'SEN' button on your BRAVIA remote and explore a world of online content and apps, brought to you by Sony. Browse quick links to the latest movies, TV and music releases plus loads of classic content. Access your favourite web video services, social networking and other apps at a touch. Let Sony Entertainment Network be your personal concierge – guiding you quickly and easily to the very best content that's out there.

## Sony LIV™ - One door into the world of Sony Entertainment Network



Now watch your favorite shows from Sony Entertainment Network anytime you want exclusively on BRAVIA. Sony LIV™ is Sony Entertainment Network's Video-on-Demand service available for the very first time on television. LIV™ delivers a world-class viewing experience from your favorite channels.



You can also re-LIV the Classics and travel back in time to watch the 1st ever episode of your favorite Sony Television shows like Jassi Jaisi Koi Nahin, Aahat, CID, Bade Acche Lagte Hain, Taarak Mehta ka Ooltah Chashmah, Crime Patrol, Office Office and a lot more.



## Chat with friends and family, anywhere in the world



Stay in touch with friends and family wherever they are with Skype™ – the world's most popular internet voice and video telephony service. Dial and receive calls for free with other Skype™ users. Capturing crisp, clear audio and high-quality HD video\*, the compact new microphone/camera unit is half the size of its predecessor. You'll enjoy superb picture quality during video chats thanks to X-RealityPRO™. Play show-and-tell with the auto focus camera that gives a pin-sharp view, even with newsprint and other hard-to-see objects.



Skype Camera sold separately.

\* Depends on specs of the caller's Skype™ camera and the network quality between both sides of Skype calls.

## Enjoy YouTube™ on the big screen with ease



Sit back, relax and enjoy the world's most popular video-sharing website on BRAVIA's big screen. With an intuitive new interface, YouTube™ Leanback lets you browse your favourite video clips, just like changing TV channels. BRAVIA's powerful X-Reality PRO picture engine transforms your viewing experience, with far superior picture quality to watching YouTube™ on a PC. You can also control your viewing with a free YouTube™ Remote app for Sony Tablet, Xperia™ or Android phones.



## 3G Dongle Plug & Play

Enjoy instant & superfast 3G connectivity on BRAVIA with Direct Dongle Plug in\*\*. This exclusive internet connectivity option lets you explore a world of entertainment possibilities. Simply plug-in the 3G dongle directly to BRAVIA and access internet without any tricky set-up. Internet access was never this easy!

\*\*Applicable with select dongles only. Please check compatibility before purchasing.



## Wireless LAN

### Wireless LAN Built-in

Maximize your entertainment while reducing cable clutter. Wirelessly stream beautiful, HD entertainment straight from the internet or your home network.



### Wireless LAN Ready

Make your Wi-Fi-ready TV a wireless wonder. With the UWA-BR100 Wi-Fi® adapter (sold separately), you have instant access to stream movies, photos, music and videos straight to your TV from the internet or your home network —without wires.



\*The above mentioned unique features are model specific and may vary for each model. Please refer to comparison chart.



|                 |                             | 3D LED BRAVIA                           |   |                      |                                      | LED BRAVIA      |                        |                 |                       |                         |                       |                       |
|-----------------|-----------------------------|---|---|----------------------|--------------------------------------|-----------------|------------------------|-----------------|-----------------------|-------------------------|-----------------------|-----------------------|
|                 | Series Name                 | X9004A                                  | W950A                                   | W900A                | W850A                                | W700A           | W670A                  | W650A           | W600A                 | R452A                   | R422A                 | R402A                 |
|                 | Available Sizes             | 164cm (65) / 139cm (55)                 | 139cm (55) / 117cm (46)                 | 102cm (40)           | 139cm (55) / 119cm (47) / 107cm (42) | 117cm (46)      | 107cm (42) / 80cm (32) | 80cm (32)       | 80cm (32) / 60cm (24) | 117cm (46) / 102cm (40) | 80cm (32) / 60cm (24) | 80cm (32) / 60cm (24) |
| PICTURE QUALITY | Picture Quality Enhancement |   |   |                      |                                      |                 |                        |                 |                       |                         |                       |                       |
|                 | Wider Colour Reproduction   |   |   |                      |                                      | -               | -                      | -               | -                     | -                       | -                     | -                     |
|                 | High Definition             |   |   |                      |                                      |                 |                        |                 |                       |                         | -                     | -                     |
|                 | MotionFlow                  |   |   |                      |                                      |                 |                        |                 |                       |                         |                       |                       |
| SOUND           | Speakers                    |   |   |                      |                                      |                 |                        |                 |                       | -                       | -                     | -                     |
| INTERNET TV     | 3G Dongle Plug-In           |   |   |                      |                                      |                 |                        |                 |                       | -                       | -                     | -                     |
|                 | Watch                       |   |   |                      |                                      |                 |                        |                 |                       | -                       | -                     | -                     |
|                 | Communicate                 |   |   |                      |                                      |                 |                        |                 |                       | -                       | -                     | -                     |
|                 | Wi-Fi                       |   |   |                      |                                      |                 |                        |                 |                       | -                       | -                     | -                     |
| CONNECTIVITY    | Design                      | Monolithic Design<br>Sense of Quartz    | Monolithic Design<br>Sense of Quartz    | Sense of Quartz      | Sense of Quartz                      | Sense of Quartz | Sense of Quartz        | Sense of Quartz | Sense of Quartz       | -                       | -                     | -                     |
|                 | One-Touch Connect           |   |   |                      |                                      |                 | -                      | -               | -                     | -                       | -                     | -                     |
|                 | Screen Mirroring            |   |   |                      |                                      |                 |                        |                 |                       | -                       | -                     | -                     |
| OTHERS          | MHL                         |   |   |                      |                                      |                 |                        |                 |                       |                         |                       |                       |
|                 | 11 Indian Languages         |   |   |                      |                                      |                 |                        |                 |                       |                         |                       |                       |
|                 | USB                         |   |   |                      |                                      |                 |                        |                 |                       |                         |                       |                       |
|                 | HDMI                        |   |   |                      |                                      |                 |                        |                 |                       |                         |                       |                       |
|                 | Photo Frame Mode            | -                                       | -                                       | -                    | -                                    | -               | -                      | -               | -                     |                         | -                     | -                     |
|                 | FM Radio                    | -                                       | -                                       | -                    | -                                    | -               | -                      | -               | -                     |                         |                       |                       |
|                 | Supplied Accessories        | One Touch Remote & 3D Glasses (4 Units) | One Touch Remote & 3D Glasses (4 Units) | 3D Glasses (2 Units) | 3D Glasses (4 Units)                 | -               | -                      | -               | -                     | -                       | -                     | -                     |
|                 | Refer Page No.              | 22                                      | 23                                      | 24                   | 25                                   | 26              | 27                     | 27              | 28                    | 30                      | 29                    | 30                    |

# X9004 SERIES

Experience Perfection

Available in: 164 cm (65) • 139 cm (55)



# W950A SERIES

Experience vivid colours in the most spectacular design

Available in: 139 cm (55) • 117 cm (46)



**TRILUMINOS**  
DISPLAY

**4K** X-Reality PRO

Monolithic Design

1920 x 1080  
Full HD

**3D**

Motionflow XR  
800

**TRILUMINOS**  
DISPLAY

**X-Reality** PRO

Monolithic Design

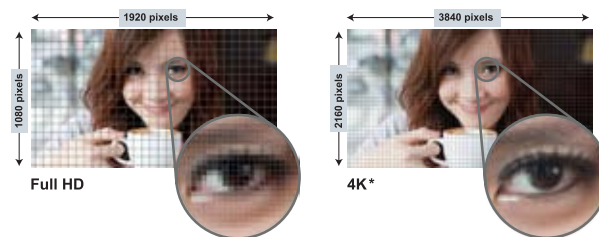
1920 x 1080  
Full HD

**3D**

Motionflow XR  
800

## Witness a revolution in resolution **4K**\*

It's time to take your viewing into a brand new era. The 4K\* LED screen contains no less than 8 million individual pixels (3,840 x 2,160 pixels). That's four times more detail than your Full HD TV. Advanced picture processing ensures that every one of those pixels displays images with superb quality. Look closely: it's just like seeing real life.



## Sense of Quartz

New vision for the ultimate clarity and experience. "Sense of Quartz" is the expression of essential value through genuine materials. A monolithic glass slate that appears to float over a ring-shaped base, their connection forming the intelligent core. The composition displays the distinctive silhouette of Sony BRAVIA.



**SOUND**  
MAGNETIC FLUID SPEAKER

**CONNECTIVITY**  
 SONY BIG FLIX  
 indiatimes  
 b  
 O  
 YouTube  
 skype  
 f  
 DONGLE  
 Wireless LAN Built-in  
 TV SideView  
 dlna

**OTHER FEATURES**  
 One-touch connect  
 Screen mirroring  
 MHL  
 Super Multi-format PLAY  
 11 Indian Languages  
 HDMI x4

**SOUND**  
BASS REFLEX BOX BREAKER WITH TWEETER

**CONNECTIVITY**  
 SONY BIG FLIX  
 indiatimes  
 b  
 O  
 YouTube  
 skype  
 f  
 DONGLE  
 Wireless LAN Built-in  
 TV SideView  
 dlna

**OTHER FEATURES**  
 One-touch connect  
 Screen mirroring  
 MHL  
 Super Multi-format PLAY  
 11 Indian Languages  
 HDMI x4

### Enhance your BRAVIA usage



SLT-A99  
Sony DSLT Camera



MDR-IF245  
Cordless Headphone with Adjustable Headband



Xperia™ Z1  
Sony Smartphone

### Attractive FREEBIES



3D Glasses (TDG-500P) - 4 pcs.  
worth Rs. 1,396/-

One-touch remote control  
worth Rs. 2,499/-

### Enhance your BRAVIA usage



BDV-N9100W  
4 Long Speakers  
Sony Home Theatre System



BDV-S4100  
Sony Blu-Ray Player



MDR-IF245  
Cordless Headphone with Adjustable Headband



Xperia™ Z1  
Sony Smartphone

### Attractive FREEBIES



3D Glasses (TDG-BT500A) - 4 pcs. worth Rs. 7,996/-

One-touch remote control  
worth Rs. 2,499/-



# W900A SERIES

Experience breath-taking picture & sound quality

Available in: • 102 cm (40)



# W850A SERIES

Your most immersive, rewarding 3D experience

Available in: 139 cm (55) • 119 cm (47) • 107 cm (42)



**X-Reality PRO**



**X-Reality PRO**



## Best ever colour that's never been more real

TRILUMINOS™ Display creates incredibly true, natural shades of colours – just the way you want to see them. Hard-to-reproduce reds and emerald greens are displayed beautifully, so landscapes and seascapes look more vivid, richer and more intense.



Conventional White LED

A narrower colour space can be compared to having fewer colour pencils with which to draw



TRILUMINOS DISPLAY

A wider colour space can be compared to having more colour pencils with which to draw



## Immerse yourself in life-like 3D viewing experience

Watch 3D movies on Blu-ray Disc, 3D TV broadcasts and 3D web videos. Slip on the latest generation of light, comfortable 3D glasses to enjoy your favourite 3D content - and let all the family share the experience with a great view of the action.



### SOUND

LONG DUTY SPEAKER

### CONNECTIVITY



### OTHER FEATURES



### SOUND

BASS REFLEX BOX SPEAKER

### CONNECTIVITY



### OTHER FEATURES



### Enhance your BRAVIA usage



**BDV-N9100W**  
4 Long Speakers  
Sony Home Theatre System



**BDV-S4100**  
Sony Blu-Ray Player



**MDR-IF245**  
Cordless Headphone with  
Adjustable Headband



**Xperia™ Z Ultra**  
Sony Smartphone

### Attractive FREEBIES



**3D Glasses (TDG-BT500A)** - 2 pcs.  
worth Rs. 3,998/-

### Enhance your BRAVIA usage



**BDV-N7100W**  
4 Long Speakers  
Sony Home Theatre System



**BDV-S4100**  
Sony Blu-Ray Player



**MDR-IF245**  
Cordless Headphone with  
Adjustable Headband



**Xperia™ Z**  
Sony Smartphone

### Attractive FREEBIES



**3D Glasses (TDG-500P)** - 4 pcs.  
worth Rs. 1,396/-



# W700A SERIES

Explore the power of One-touch connect

Available in: • 117 cm (46)



**X-Reality PRO**

Full HD  
1080

Motionflow XR  
200

## See your smartphone's screen on BRAVIA at a single touch

All it takes is "One-touch". Briefly place your NFC-enabled Xperia™ smartphone close to the One-touch Remote Control that comes with BRAVIA. Wireless connection is established instantly with the TV... then view exactly what's on your smartphone's screen super-size on BRAVIA. Videos, photos, apps, web pages and games all look great on TV, with sound reproduced loud and clear through the TV's speakers.



### SOUND



### CONNECTIVITY



### OTHER FEATURES



### Enhance your BRAVIA usage



**BDV-E4100**  
2 Long Speakers  
Sony Home Theatre System



**BDV-S1100**  
Sony Blu-Ray Player



**MDR-IF245**  
Cordless Headphone with  
Adjustable Headband



**Xperia™ ZR**  
Sony Smartphone

# W670A/650A SERIES

Experience Seamless Connectivity

Available in: W670A • 107 cm (42) • 80 cm (32) W650A • 80 cm (32)



**X-Reality PRO**

Full HD  
1080

Motionflow XR  
200

## 3G Dongle Plug & Play



Enjoy instant & superfast 3G connectivity on BRAVIA with Direct Dongle\* Plug-in. Internet access was never this easy and entertaining !

**Watch. Browse. Communicate. Share.**



### SOUND



### CONNECTIVITY



### OTHER FEATURES



### Enhance your BRAVIA usage



**BDV-E3100**  
3D Blu-Ray  
Sony Home Theatre System



**BDV-S1100**  
Sony Blu-Ray Player



**MDR-XD150**  
Headphone for Dynamic,  
Movie-quality Sound



**Xperia™ SP**  
Sony Smartphone

\*Applicable with select dongles only  
\*\*Applicable with W670A series



# W600A SERIES

Best Picture Quality from any source

\*\*Available in: • 80 cm (32) • 60 cm (24)



# R422A SERIES

Enjoy your favourite photos on the big screen

Available in: 80 cm (32) • 60 cm (24)



## X-Reality PRO



### The best quality ever, from any picture source

### X-Reality PRO

Experience stunning picture quality, whether you're watching movies on Blu-ray Disc, regular TV broadcasts, web videos or low-resolution smartphone clips. Sony's latest-generation processing engine analyses, cleans and refines images – restoring beautiful results from any source with more natural detail, richer colours and high contrast. The latest Reality Creation database and Super Resolution processing optimize images for incredible detail and sharpness, whether you're watching in 2D or 3D.



Clear Resolution Enhancer



### Enjoy your photos on the big screen while listening to music



### Photo Frame Mode

Turn your TV into a super-size digital photo frame. Just connect a USB drive and enjoy all those photo memories on the big screen with reduced energy consumption. View slideshows while listening to FM radio or music stored on USB memory.



#### SOUND



#### CONNECTIVITY



#### PICTURE QUALITY



#### SOUND



#### OTHER FEATURES



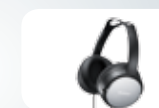
#### Enhance your BRAVIA usage



**BDV-E3100**  
3D Blu-Ray  
Sony Home Theatre System



**BDV-S1100**  
Sony Blu-Ray Player



**MDR-XD150**  
Headphone for Dynamic,  
Movie-quality Sound



**Xperia™ SP**  
Sony Smartphone

\*Not applicable with 24W600.  
\*\*Model design may vary as per sizes.

#### Enhance your BRAVIA usage



**DAV-TZ215**  
High Performance  
Sony Home Theatre System



**DAV-TZ145**  
High Performance  
Sony Home Theatre System



**BDV-S1100**  
Sony Blu-Ray Player



**MDR-XD150**  
Headphone for Dynamic,  
Movie-quality Sound

R452A/402A

SERIES

Enjoy, crisper, more detailed TV picture

Available in: R452A • 117 cm (46) • 102 cm (40) R402A • 80 cm (32) • 60 cm (24)



Clear  
Resolution  
Enhancer



Enjoy Crisp TV images with fine textures and detail



Clear  
Resolution  
Enhancer

With Clear Resolution Enhancer, you'll enjoy accurate reproduction of fine details and textures, even in flat image areas. Crisper, clearer images also benefit from heightened contrast that boosts the perception of on-screen depth, without sacrificing black saturation.



PICTURE QUALITY



Intelligent  
Picture  
PLUS



Digital Noise  
Reduction



SOUND



OTHER FEATURES



MHL  
Mobile High-Definition Link



Super  
Multi-Format  
PLAY



FM  
Radio



11  
Indian  
Languages



HDMI  
x2



BRAVIA  
Sync

Enhance your BRAVIA usage



**DAV-TZ215**  
High Performance  
Sony Home Theatre System



**BDV-S1100**  
Sony Blu-Ray Player



**MDR-XD150**  
Headphone for Dynamic,  
Movie-quality Sound

\*Applicable with R452A Series

3D LED BRAVIA SPECIFICATIONS

| Model Code           | Series                                      | X9004A   |   | W950A                                     |                    | W900A                        | W850A                  |                   |                  |
|----------------------|---|--|---|---|--------------------|------------------------------|------------------------|-------------------|------------------|
|                      | Model No.                                   | KD-65X9004A  | KD-55X9004A   | KDL-55W950A                               | KDL-46W950A        | KDL-40W900A                  | KDL-55W850A            | KDL-47W850A       | KDL-42W850A      |
| Display              | Screen Size                                 | 164 cm (65)  | 139 cm (55)   | 139 cm (55)                               | 117 cm (46)        | 102 cm (40)                  | 139 cm (55)            | 119 cm (47)       | 107 cm (42)      |
| Picture              | Display Resolution                          | 4K (3840x2160 Pixels)  |   | Full HD (1920x1080 Pixels)                |                    |                              |                        |                   |                  |
|                      | Video Processing                            | 4K X-Reality™ PRO  |   | X-Reality™ PRO                            |                    |                              |                        |                   |                  |
|                      | Wider Color Reproduction                    | Triluminos™ Display  |   |   |                    |                              |                        |                   |                  |
|                      | Motionflow                                  | Motionflow XR 800  |   |   |                    |                              | Motionflow XR 400      |                   |                  |
|                      | Wide Mode                                   | Full,Normal,Wide Zoom,Zoom,Caption,14:09,Normal/Full1/Full2 for PC   |   |   |                    |                              |                        |                   |                  |
|                      | Noise Reduction                             | MPEG Noise Reduction   |   |   |                    |                              |                        |                   |                  |
|                      | Picture Mode                                | Vivid, Standard, Custom, Photo-Vivid, Photo-Standard, Photo-Original, Photo-Custom, Cinema1, Cinema2, Game-Standard, Game-Original, Graphics, Sports,Animation   |   |   |                    |                              |                        |                   |                  |
| System               | Scene Select                                | Photo,Music,Cinema,Game,Graphics,Sports,Animation  |   |   |                    |                              |                        |                   |                  |
|                      | TV System (Analog)                          | B/G,D/K,I,L,M  |   |   |                    |                              |                        |                   |                  |
|                      | Color System                                | PAL,SECAM,NTSC 3.58,NTSC 4.43  |   |   |                    |                              |                        |                   |                  |
| 3D Features          | Video Signal                                | 3840x2160/24p,3840x2160/25p,3840x2160/30p,4096x2160/24p,1080/24p (HDMI only),1080/60i,1080/60p(HDMI / Component),1080/50i,1080/50p(HDMI / Component),480/60i,480/60p,576/50i,576/50p,720/60p,720/50p,1080/30p (HDMI only),720/30p (HDMI only),720/24p (HDMI only)          | 1080/24p (HDMI only),1080/60i,1080/60p(HDMI / Component),1080/50i,1080/50p(HDMI / Component),480/60i,480/60p,576/50i,576/50p/720/60p,720/50p,1080/30p (HDMI only),720/30p (HDMI only),720/24p (HDMI only) |   |                    |                              |                        |                   |                  |
|                      | 3D Super-resolution                         | Yes  |   |   |                    |                              |                        |                   |                  |
|                      | Auto 3D Depth Adjustment                    | Yes  |   |   |                    |                              |                        |                   |                  |
| Audio                | 3D Sync Transmitter Integrated              | -  |   | Yes                                       |                    |                              | -                      |                   |                  |
|                      | 3D Format Support                           | Yes (2K-only)  |   | Yes                                       |                    |                              |                        |                   |                  |
|                      | Simulated 3D                                | Yes (2K-only)  |   | Yes                                       |                    |                              |                        |                   |                  |
|                      | Sony Unique Speakers                        | Magnetic Fluid Speaker   |   | Bass Ref Box Speaker with Tweeter         |                    | Long Duct Speaker            | Bass Ref Box Speaker   |                   |                  |
|                      | Speaker Configuration                       | 2.2ch, Two way speaker(Tweeter(18mm)x2, Woofer (Magnetic Fluid Speaker, 80mm)x2] + Sub Woofer(70mm) x 2  |   | 2ch, Tweeter(20x40mm)x2, Woofer(57mm) x 2 |                    | 2ch, Full Range(30x80mm) x 2 |                        |                   |                  |
|                      | Audio Power Output                          | 12.5W+12.5W+20W+20W  |   | 10W+10W                                   |                    |                              |                        |                   |                  |
|                      | Signal-to-Sound Architecture                | Yes  |   |   |                    |                              |                        |                   |                  |
| Design               | Sound Mode                                  | Standard,Cinema,Sports,Music,Game,Compressed Audio   |   |   |                    |                              |                        |                   |                  |
|                      | Sony Original Sound                         | S-Force Front Surround 3D  |   |   |                    |                              |                        |                   |                  |
|                      | Stereo System                               | NICAM/A2   |   |   |                    |                              |                        |                   |                  |
|                      | OptiContrast Panel                          | Yes  |   |   |                    | -                            |                        |                   |                  |
|                      | Stand Design                                | Circle / Chrome Plating  |   | Loop, Aluminum Hair-line                  |                    | Loop, Chrome Plating         | Loop, Silver Hair-line |                   |                  |
|                      | Sense of QUARTZ                             | Yes  |   |   |                    |                              |                        |                   |                  |
|                      | Illumination LED                            | Yes  |   |   |                    |                              |                        |                   |                  |
| Network              | Stand Swivel                                | -  |   | Left 15 degree/Right 15 degree            |                    |                              |                        |                   |                  |
|                      | Wireless LAN                                | Integrated   |   |   |                    |                              |                        |                   |                  |
|                      | Wi-Fi Direct                                | Yes  |   |   |                    |                              |                        |                   |                  |
|                      | Sony Entertainment Network                  | Yes  |   |   |                    |                              |                        |                   |                  |
|                      | Opera Apps (System)                         | Yes  |   |   |                    |                              |                        |                   |                  |
|                      | Skype™                                      | Ready  |   |   |                    |                              |                        |                   |                  |
|                      | BRAVIA Internet Videos (System)             | Yes  |   |   |                    |                              |                        |                   |                  |
| Connectivity         | Internet_Browser                            | Yes(Opera)   |   |   |                    |                              |                        |                   |                  |
|                      | BRAVIA Sync                                 | Yes  |   |   |                    |                              |                        |                   |                  |
|                      | DLNA Content                                | MPEG1/MPEG2PS/MPEG2TS/AVCHD/MP4Part10/MP4Part2/AVI(XVID)/AVI(MotinJpeg)/MOV/WMV/MKV/WEBM/3GPP/MP3/WMA/LPCM/JPEG/MPO  |   |   |                    |                              |                        |                   |                  |
|                      | One-touch Connect                           | Yes  |   |   |                    |                              |                        |                   |                  |
|                      | MHL   | Yes  |   |   |                    |                              |                        |                   |                  |
|                      | Screen mirroring                            | Yes  |   |   |                    |                              |                        |                   |                  |
|                      | Remote App for Smartphone                   | TV SideView™   |   |   |                    |                              |                        |                   |                  |
| Terminals            | USB Super Multi-Format Play                 | Yes  |   |   |                    |                              |                        |                   |                  |
|                      | USB Play (Contents)                         | MPEG1/MPEG2PS/MPEG2TS/AVCHD/MP4Part10/MP4Part2/AVI(XVID)/AVI(MotinJpeg)/MOV/WMV/MKV/WEBM/3GPP/MP3/WMA/WAV/JPEG/MPO/RAW(ARW)  |   |   |                    |                              |                        |                   |                  |
|                      | USB Play                                    | Yes (USB viewer supports FAT16, FAT32, exFAT and NTFS file systems.)   |   |   |                    |                              |                        |                   |                  |
|                      | HDMI™ Connection(s) (Total)                 | 4 Ports  |   |   |                    |                              |                        |                   |                  |
|                      | USB   | 3 Ports  |   |   |                    |                              |                        |                   |                  |
|                      | AC Power Input                              | 1(REAR)  |   |   |                    |                              |                        |                   |                  |
|                      | RF Connection Input(s)                      | 1 (Bottom)   |   |   |                    |                              |                        |                   |                  |
|                      | Composite Video Input(s)                    | 2 (1Rear/1Rear Hybrid w/Component)   |   |   |                    |                              |                        |                   |                  |
|                      | Component Video (Y/Pb/Pr) Input(s)          | 1 (Rear/Hybrid)  |   |   |                    |                              |                        |                   |                  |
|                      | Analog Audio Input(s) for HDMI              | -  | 1 (Side)  |   |                    |                              |                        |                   |                  |
| Others               | Analog Audio Input(s) (Total)               | 2 (Rear)   |   |   |                    |                              |                        |                   |                  |
|                      | Digital Audio Output(s)                     | 1(Rear)  | 1(Bottom)   |   | 1(Rear)            |                              |                        |                   |                  |
|                      | Audio Out                                   | 1 (Side/Hybrid w/HP)   |   |   |                    |                              |                        |                   |                  |
|                      | Headphone Output(s)                         | 1 (Side/Hybrid w/Audio Out)  |   |   |                    |                              |                        |                   |                  |
|                      | Ethernet Connection(s)                      | 1 (Vertical)   | 1 (Bottom)  |   | 1 (Vertical)       |                              |                        |                   |                  |
|                      | HDMI™ PC Input                              | Yes  |   |   |                    |                              |                        |                   |                  |
|                      | Multiple Language Display                   | 11 Indian Languages: Assamese/Bengali/Gujarati/Hindi/Kannada/Malayalam/Marathi/Oriya/Punjabi/Tamil/Telugu<br>Other Languages:Afrikaans/Arabic/Persian/English/French/Indonesian/Portuguese/Russian/Swahili /Thai/Vietnamese/Chinese(Simplified)/Chinese(Traditional)/Zulu/ |   |   |                    |                              |                        |                   |                  |
| Supplied Accessories | Twin Picture                                | PAP(Variable)  |   |   |                    |                              |                        |                   |                  |
|                      | i-Manual                                    | Yes  |   |   |                    |                              |                        |                   |                  |
|                      | Sleep Timer                                 | Yes  |   |   |                    |                              |                        |                   |                  |
|                      | Picture Frame Mode                          | Yes  |   |   |                    |                              |                        |                   |                  |
|                      | Hotel Mode Menu                             | Yes  |   |   |                    |                              |                        |                   |                  |
|                      | On Screen Instruction Manual                | Yes  |   |   |                    |                              |                        |                   |                  |
|                      | Light Sensor                                | Yes  |   |   |                    |                              |                        |                   |                  |
| General              | Power Requirements (voltage/frequency)      | AC 110-240V/ 50/60Hz   |   |   |                    |                              |                        |                   |                  |
|                      | Power Consumption (in Operation)            | 338W   | 268W  | 158W                                      | 136W               | 119W                         | 146W                   | 128W              | 116W             |
|                      | Power Consumption (in Standby)              | 0.4W   |   | 0.3W                                      |                    |                              |                        |                   |                  |
|                      | Dimensions (W x H x D) (Without stand) (mm) | 1682x875x100(58) mm / 66 1/4 x 34 1/2 x 4(2 3/8) inch  | 1463x749x100(58) mm / 57 5/8 x 29 1/2 x 4(2 3/8) inch   | 1250x729x115(14.6)                        | 1058x620x115(14.6) | 917x541x61(38.8)             | 1253x735x64(46.4)      | 1083x639x64(46.2) | 971x577x63(46.1) |
|                      | Dimensions (W x H x D) (With stand) (mm)    | 1682x903x405 mm / 66 1/4 x 35 5/8 x 16 inch  | 1463x778x405 mm / 57 5/8 x 30 3/4 x 16 inch   | 1250x765x307                              | 1058x657x307       | 917x574x298                  | 1253x768x298           | 1083x672x298      | 971x609x298      |
| Supplied Accessories | Weight (Without stand) (Kg)                 | 45.0   | 33.1  | 25.6                                      | 20.8               | 12.3                         | 18.4                   | 14.6              | 12.3             |
|                      | Weight (With stand) (Kg)                    | 46.4   | 34.5  | 28.1                                      | 23.3               | 14.4                         | 20.7                   | 16.7              | 14.4             |
|                      | Remote Control                              | RM-GD026   |   |   |                    |                              |                        |                   |                  |
| Supplied Accessories | One-touch Remote Control                    | RMF-ED003  |   |   |                    |                              |                        |                   |                  |
|                      | 3D Glasses                                  | TDG-500P x 4   |   | TDG-BT500A x 4                            |                    | TDG-BT500A x 2               |                        | TDG-500P x 4      |                  |



| LED BRAVIA SPECIFICATIONS |   |   |                                      |                   |                               |  |                                |
|---------------------------|---|---|--------------------------------------|-------------------|-------------------------------|--|--------------------------------|
| Model Code                | Series                                      | W700A   | W670A                                |                   | W650A                         | W600A                                  |                                |
|                           | Model No.                                   | KDL-46W700A   | KDL-42W670A                          | KDL-32W670A       | KDL-32W650A                   | KDL-32W600A                            | KDL-24W600A                    |
| Display                   | Screen Size                                 | 117 cm (46)   | 107 cm (42)                          | 80 cm (32)        | 80 cm (32)                    | 80 cm (32)                             | 60 cm (24)                     |
| Picture                   | Display Resolution                          | Full HD (1920 x 1080 Pixels)  |                                      |                   |                               | WXGA (1366 x 768 Pixels)               |                                |
|                           | Video Processing                            | X-Reality™ PRO  |                                      |                   |                               |  |                                |
|                           | Motionflow                                  | Motionflow XR 200   |                                      |                   |                               |  |                                |
|                           | Live Colour™ Technology                     | Yes   |                                      |                   |                               |  |                                |
|                           | Wide Mode                                   | Full, Normal, Wide Zoom, Zoom, Caption, 14:09, Normal/Full1/Full2 for PC  |                                      |                   |                               |  |                                |
|                           | Noise Reduction                             | MPEG Noise Reduction  |                                      |                   |                               |  |                                |
|                           | Picture Mode                                | Vivid, Standard, Custom, Photo-Vivid, Photo-Standard, Photo-Original, Photo-Custom, Cinema1, Cinema2, Game-Standard, Game-Original, Graphics, Sports, Animation   |                                      |                   |                               |  |                                |
|                           | Scene Select                                | Photo, Music, Cinema, Game, Graphics, Sports, Animation   |                                      |                   |                               |  |                                |
| System                    | TV System (Analog)                          | B/G,D/K,I,L,M   |                                      |                   |                               |  |                                |
|                           | Color System                                | PAL,SECAM,NTSC 3.58,NTSC 4.43   |                                      |                   |                               |  |                                |
|                           | Video Signal                                | 1080/24p (HDMI only),1080/60i,1080/60p(HDMI / Component),1080/50i,1080/50p(HDMI / Component),480/60i,480/60p,576/50i,576/50p,720/60p,720/50p,1080/30p (HDMI only),720/30p (HDMI only),720/24p (HDMI only)   |                                      |                   |                               |  |                                |
| Audio                     | Sony Unique Speakers                        | Bass Reflex Box Speaker   |                                      |                   |                               |  | -                              |
|                           | Speaker Configuration                       | 2ch, Full Range (30x80mm) x 2   |                                      |                   | 2ch, Full Range (30x60mm) x 2 |  | 2ch, Full Range (35x80mm) x 2  |
|                           | Audio Power Output                          | 10W+10W   | 8W+8W                                | 5W+5W             |                               |  |                                |
|                           | Signal-to-Sound Architecture                | Yes   |                                      |                   |                               |  |                                |
|                           | Sound Mode                                  | Standard,Cinema,Sports,Music,Game,Compressed Audio  |                                      |                   |                               |  |                                |
|                           | Sony Original Sound                         | S-Force Front Surround 3D   |                                      |                   |                               |  |                                |
| Design                    | Stereo System                               | NICAM/A2  |                                      |                   |                               |  |                                |
|                           | Stand Design                                | Loop, Glossy Black  | Steel Rod / Chrome Plating (2Way)    |                   |                               | Steel Rod / Dark Chrome Plating (2Way) | Steel Rod / Sandblasted (2Way) |
|                           | Sense of QUARTZ                             | Yes   |                                      |                   |                               |  |                                |
|                           | Illumination LED                            | Yes   |                                      |                   |                               |  |                                |
| Network                   | Stand Swivel                                | Left 15° / Right 15°  | -                                    |                   |                               |  |                                |
|                           | Wireless LAN                                | Integrated  |                                      |                   | Requires UWA-BR100            |  |                                |
|                           | Wi-Fi Direct                                |   |                                      |                   | Yes                           |  |                                |
|                           | Sony Entertainment Network                  |   |                                      |                   | Yes                           |  |                                |
|                           | Opera Apps (System)                         |   |                                      |                   | Yes                           |  |                                |
|                           | Skype™                                      |   |                                      |                   | Ready                         |  |                                |
|                           | BRAVIA Internet Videos (System)             |   |                                      |                   | Yes                           |  |                                |
|                           | Internet_Browser                            |   |                                      |                   | Yes(Opera)                    |  |                                |
| Connectivity              | BRAVIA Sync                                 |   |                                      |                   | Yes                           |  |                                |
|                           | DLNA Content                                | MPEG1/MPEG2PS/MPEG2TS/AVCHD/MP4Part10/MP4Part2/AVI(XVID)/AVI(MotinJpeg)/MOV/WMV/MKV/WEBM/3GPP/MP3/WMA/LPCM/JPEG/MPO   |                                      |                   |                               |  |                                |
|                           | One-touch Connect                           | Yes   | -                                    |                   |                               |  |                                |
|                           | MHL   |   | Yes                                  |                   |                               |  |                                |
|                           | Screen mirroring                            |   | Yes                                  |                   |                               |  |                                |
|                           | Remote App for Smartphone                   | TV Sideview™  |                                      |                   |                               |  |                                |
|                           | USB Super Multi-Format Play                 | Yes   |                                      |                   |                               |  |                                |
|                           | USB Play (Contents)                         | MPEG1/MPEG2PS/MPEG2TS/AVCHD/MP4Part10/MP4Part2/AVI(XVID)/AVI(MotinJpeg)/MOV/WMV/MKV/WEBM/3GPP/MP3/WMA/WAV/JPEG/MPO/RAW(ARW)   |                                      |                   |                               |  |                                |
| Terminal                  | USB Play                                    | Yes (USB viewer supports FAT16, FAT32, exFAT and NTFS file systems.)  |                                      |                   |                               |  |                                |
|                           | HDMI™ Connection(s) (Total)                 | 4 Ports   | 2 Ports                              |                   |                               |  |                                |
|                           | USB   | 2 Ports   | 1 Port                               |                   |                               |  |                                |
|                           | AC Power Input                              | 1(REAR)   | AC ADAPTOR                           |                   |                               |  |                                |
|                           | RF Connection Input(s)                      | 1 (Bottom)  | 1 (Side)                             |                   |                               |  |                                |
|                           | Composite Video Input(s)                    | 2 (1Rear/1Rear Hybrid w/ Component)   | 2 (1Rear/1Bottom Hybrid w/Component) |                   |                               |  |                                |
|                           | Component Video (Y/Pb/Pr) Input(s)          | 1 (Rear/Hybrid)   | 1 (Bottom/Hybrid)                    |                   |                               |  |                                |
|                           | Analog Audio Input(s) for HDMI              | 1 (Side)  | -                                    |                   |                               |  |                                |
|                           | Analog Audio Input(s) (Total)               | 2 (Rear)  | 2 (Rear1/Bottom1)                    |                   |                               |  |                                |
|                           | Digital Audio Output(s)                     | 1(Rear)   | 1(Bottom)                            |                   |                               |  |                                |
|                           | Audio Out                                   | 1 (Side / Hybrid W / HP)  |                                      |                   |                               |  |                                |
|                           | Headphone Output(s)                         | 1 (Side/Hybrid w/Audio Out)   |                                      |                   |                               |  |                                |
| Others                    | Ethernet Connection(s)                      | 1 (Vertical)  | 1 (Bottom)                           |                   |                               |  |                                |
|                           | HDMI™ PC Input                              | Yes   |                                      |                   |                               |  |                                |
|                           | Multiple Language Display                   | 11 Indian Languages: Assamese/Bengali/Gujarati/Hindi/Kannada/Malayalam/Marathi/Oriya/Punjabi/Tamil/Telugu<br>Other Languages:Afrikaans/Arabic/Persian/English/French/Indonesian/Portuguese/Russian/Swahili /Thai/Vietnamese/Chinese(Simplified)/Chinese(Traditional)/Zulu |                                      |                   |                               |  |                                |
|                           | Picture Frame Mode                          | Yes   |                                      |                   |                               |  |                                |
|                           | Twin Picture                                | PAP(Variable)   |                                      |                   |                               |  |                                |
|                           | i-Manual                                    | Yes   |                                      |                   |                               |  |                                |
|                           | Sleep Timer                                 | Yes   |                                      |                   |                               |  |                                |
|                           | Hotel Mode Menu                             | Yes   |                                      |                   |                               |  |                                |
| General                   | On Screen Instruction Manual                | Yes   |                                      |                   |                               |  |                                |
|                           | Light Sensor                                | Yes   |                                      |                   |                               |  |                                |
|                           | Power Requirements (voltage)                | AC 110-240V/50/60Hz   | DC 19.5V                             |                   |                               |  |                                |
|                           | Power Consumption (in Operation)            | 126W  | 84W                                  | 67W               | 67W                           | 67W                                    | 45W                            |
|                           | Power Consumption (in Standby)              | 0.3W  | 0.5W                                 |                   |                               |  |                                |
|                           | Dimensions (W x H x D) (Without stand) (mm) | 1059x626x64 (46.2)  | 954x568x69 (15.8)                    | 725x438x69 (15.8) | 725x438x69 (15.8)             | 721x436x69 (15.8)                      | 545x336x65 (16)                |
| Supplied Accessories      | Dimensions (W x H x D) (With stand) (mm)    | 1059x659x298  | 954x595x197                          | 725x465x197       | 725x465x197                   | 721x463x197                            | 545x360x144                    |
|                           | Weight (Without stand) (Kg)                 | 14.2  | 9.9                                  | 6.8               | 6.8                           | 6.7                                    | 4                              |
|                           | Weight (With stand) (Kg)                    | 16.3  | 11                                   | 7.8               | 7.8                           | 7.7                                    | 4.5                            |
| Supplied Accessories      | Remote Control                              | RM-GD027  |                                      |                   |                               |  |                                |

| LED BRAVIA SPECIFICATIONS    |   |   |                |                                   |                |                       |                |
|------------------------------|---|---|----------------|-----------------------------------|----------------|-----------------------|----------------|
| Model Code                   | Series                                    | R452A   |                | R422A                             |                | R402A                 |                |
|                              | Model No.                                 | KLV-46R452A   | KLV-40R452A    | KLV-32R422A                       | KLV-24R422A    | KLV-32R402A           | KLV-24R402A    |
| Display                      | Screen Size                               | 117 cm (46)   | 102 cm (40)    | 80 cm (32)                        | 60 cm (24)     | 80 cm (32)            | 60 cm (24)     |
| Picture                      | Display Resolution                        | Full HD (1980 x 1080 Pixels)  |                | WXGA (1366 x 768 Pixels)          |                |                       |                |
|                              | Clear Resolution Enhancer                 | Yes   |                |                                   |                |                       |                |
|                              | Motionflow                                | Motionflow XR100  |                |                                   |                |                       |                |
|                              | Noise Reduction                           | MPEG Noise Reduction  |                |                                   |                |                       |                |
|                              | Digital Noise Reduction                   | Yes   |                |                                   |                |                       |                |
|                              | Intelligent Picture Plus                  | Yes   |                |                                   |                |                       |                |
|                              | 24P True Cinema                           | Yes   |                |                                   |                |                       |                |
|                              | Live Colour™ Technology                   | Yes   |                |                                   |                |                       |                |
|                              | Wide Mode                                 | Full, Normal, Wide Zoom, Zoom   |                |                                   |                |                       |                |
|                              | Picture Mode                              | Vivid, Standard, Custom, Cinema, Photo, Sports, Game, Graphics  |                |                                   |                |                       |                |
|                              | Scene Select                              | Auto,Photo,Music,Cinema,Game,Graphics,Sports  |                |                                   |                |                       |                |
| System                       | TV System (Analog)                        | B/G,D/K,I,M   |                |                                   |                |                       |                |
|                              | Color System                              | PAL,SECAM,NTSC 3.58,NTSC 4.43   |                |                                   |                |                       |                |
|                              | Video Signal                              | 1080/24p (HDMI/MHL),1080/60i,1080/60p (HDMI / Component),1080/50i,1080/50p (HDMI / Component),480/60i,480/60p,576/50i,576/50p,720/60p,720/50p,1080/30p (HDMI / MHL),720/30p (HDMI / MHL),720/24p (HDMI / MHL)   |                |                                   |                |                       |                |
| Audio                        | Speaker Configuration                     | 2 Full Range (3.5x8.0) x2   |                |                                   |                |                       |                |
|                              | Audio Power Output                        | 8W+8W   |                |                                   | 5W+5W          | 8W+8W                 | 5W+5W          |
|                              | Sony Original Sound                       | Sound Booster   |                |                                   |                |                       |                |
|                              | Sound Mode                                | Standard,Music,Cinema,Game,Sports   |                |                                   |                |                       |                |
|                              | Stereo System                             | NICAM/A2  |                |                                   |                |                       |                |
| Design                       | Stand Design                              | Square / Glossy Black   |                | Aluminum Rod / Sandblasted (2Way) |                | Square / Glossy Black |                |
| Network                      | BRAVIA Sync                               | Yes   |                |                                   |                |                       |                |
|                              | Wireless LAN                              | -   |                |                                   |                |                       |                |
| Connectivity                 | MHL                                       | Yes   |                |                                   |                |                       |                |
|                              | USB Super Multi Format Play               | Yes   |                |                                   |                |                       |                |
|                              | USB Play (Contents)                       | MPEG1/MPEG2TS/MPEG2PS/MPEG4Visual/MPEG4AVC/H.264/WMV/Xvid/MP3/LPCM/AAC/HE-AAC/DolbyDigitalAC3/DTS/WMA/Jpeg  |                |                                   |                |                       |                |
| Terminals                    | HDMI™ Connection(s) (Total)               | 2 Ports   |                |                                   |                |                       |                |
|                              | USB                                       | 1 Port  |                |                                   |                |                       |                |
|                              | AC Power Input                            | AC adapter (DC Power Input : 1 (Side))  |                |                                   |                |                       |                |
|                              | RF Connection Input(s)                    | 1 (Side)  |                |                                   |                |                       |                |
|                              | Composite Video Input(s)                  | 1 (Side/Hybrid w/Component)   |                |                                   |                |                       |                |
|                              | Component Video (Y/Pb/Pr) Input(s)        | 1 (Side/Hybrid w/Composite)   |                |                                   |                |                       |                |
|                              | Analog Audio Input(s) for HDMI            | 1 (Rear)  |                |                                   |                |                       |                |
|                              | Analog Audio Input(s) (Total)             | 2 (Side1/Rear1)   |                |                                   |                |                       |                |
|                              | Audio Out                                 | 1 (Rear/Hybrid w/Headphone)   |                |                                   |                |                       |                |
|                              | Headphone Output(s)                       | 1 (Rear/Hybrid w/Audio Out)   |                |                                   |                |                       |                |
|                              | HDMI™ PC Input                            | Yes   |                |                                   |                |                       |                |
|                              | Others                                    | FM Radio  | Yes            |                                   |                |                       |                |
| Multiple Language Display    |   | 11 Indian Languages: Assamese/Bengali/Gujarati/Hindi/Kannada/Malayalam/Marathi/Oriya/Punjabi/Tamil/Telugu<br>Other Languages:Afrikaans/Arabic/Persian/English/French/Indonesian/Portuguese/Russian/Swahili /Thai/Vietnamese/Chinese(Simplified)/Chinese(Traditional)/Zulu |                |                                   |                |                       |                |
| Photo Frame Mode             |   | -   |                | Yes                               |                | -                     |                |
| Picture Frame Mode           |   | -   |                | Yes                               |                | -                     |                |
| Twin Picture                 |   | -   |                |                                   |                |                       |                |
| Sleep Timer                  |   | Yes   |                |                                   |                |                       |                |
| Hotel Mode Menu              |   | Yes   |                |                                   |                |                       |                |
| On Screen Instruction Manual |   | -   |                |                                   |                |                       |                |
| General                      | Power Requirements (voltage)              | DC 19.5V  |                |                                   |                |                       |                |
|                              | Power Consumption (in Operation)          | 77W   | 76W            | 52W                               | 41W            | 52W                   | 41W            |
|                              | Power Consumption (in Standby)            | 0.5W  |                |                                   |                |                       |                |
|                              | Dimensions (W x H x D)(Without stand)(mm) | 1054x625x77(50)   | 924x551x77(49) | 735x443x75(47)                    | 558x346x69(21) | 735x443x75(47)        | 558x346x69(21) |
|                              | Dimensions (W x H x D)(With stand)(mm)    | 1054x643x181  | 924x568x181    | 735x464x171                       | 558x366x153    | 735x461x163           | 558x363x140    |
|                              | Weight (Without stand)(Kg)                | 8.8   | 6.7            | 4.6                               | 4.4            | 4.6                   | 4.4            |
| Weight (With stand)(Kg)      | 9.2                                       | 7.1   | 4.8            | 4.6                               | 4.8            | 4.5                   |                |
| Supplied Accessories         | Remote Control                            | RM-GA024  |                |                                   |                |                       |                |

# Accessories

Make the most of your BRAVIA with exciting Accessories

## Skype™ Camera & Microphone Unit



Enjoy face-to-face video calls in High Definition. Autofocus camera even captures small letters in books and newspapers with crisp details.

Compatible with all Internet BRAVIA series



CMU-BR200 • MRP Rs. 4,990/-

## USB Wireless LAN Adapter



Make your wireless LAN Ready TV a wireless wonder and enjoy instant internet connectivity

Compatible with all Wireless LAN Ready BRAVIA series



UWA-BR100 • MRP Rs. 2,990/-

## One-touch Remote Control



NFC equipped remote allows “One-touch connect” with your Xperia™ phone

Compatible with W700 series & above. Applicable with select Xperia™ smartphones.



RMD-ED003 • MRP Rs. 2,499/-

## 3D Glasses

Enjoy watching high quality 3D content



TDG-BT500A • MRP Rs. 1,999/-

Compatible with W950A & W900A series.



TDG-500P • MRP Rs. 349/-

Compatible with X9004A & W800A series.

## MHL Cable



Enjoy Smartphone's content on bigger & HD display. Just one slim cable links BRAVIA while charging your phone's battery, as you view

Compatible with all MHL enabled BRAVIA series.



DLC-MB10 • MRP Rs. 990/-

## First Beam of Light in 4K

Witness true 4K in home cinema



VPL-VW1000ES

### 4K Images Provide Fully Immersive Visual Experience

The VPL-VW1000ES projector is packed with advanced technologies to make watching 2D and 3D content at home just like being at the movies theatre. From the 4K lens and rich color reproduction, to super-high 2000-lumen brightness and a dynamic contrast ratio of 1,000,000:1, 4K revolutionizes the home cinema experience, delivering over four times the quality of Full HD.

#### FEATURES:

- No-compromise 4K Native Resolution: More than 4x Full HD Images
- 2,000 Lumens for Vibrant Images
- Remarkable Dynamic Contrast for Highest Picture Quality
- Richer Pictures with Wide Color Space (DCI, Adobe RGB)
- Lens Optimized for 4K Images
- “Reality Creation” 4K Upscaling
- Widescreen Friendly
- Picture Position Memory Matches Movie Aspect Ratio
- Anamorphic Viewing (Aspect Ratio - 2.35 :1)





Blu-ray/DVD Home Theatre

## Crystal-clear Sound with One-touch listening



**Sony 3D Blu-Ray™ Home Theatre Systems**  
**BE MOVED**

Sit back and enjoy  
the next wave of home entertainment

### NFC - One-touch Connection



You can now listen to superior quality music on your home theatre system with amazing ease. Simply connect your smartphone or tablet to Sony 3D Blu-ray™ home theatre system with a tap via NFC, stream songs wirelessly with Bluetooth®, and let the music play.



### Seamless USB and External Hard Disk Drive Connection



Make your entertainment truly spectacular and convenient with the Sony 3D Blu-ray™ home theatre system. Its front access USB port allows instant connection to USB devices and external hard disk drives, so you can view your stored content.



Experience every  
Sound detail like never before

### New Magnetic Fluid Speaker



To make your audio crystal clear, this technology features a groundbreaking innovation - Magnetic Fluid Speakers. These full-range, damperless speakers use ferrofluid to deliver significant reductions in noise and distortion, allowing for more powerful sound.



The Exceptional home entertainment system

### 'Sense of Quartz' Design

The Sony 3D Blu-ray™ home theatre systems are a sight to behold. The design draws inspiration from gems to give it a timeless look. Its streamlined body offers you the freedom to place it almost anywhere. Enhanced by an almost invisible smart disc slot, this effortless beauty would be a welcome addition to your home.





## Home Entertainment at its very best



### BDV-N9100W

- Enjoy cinema-like ambience with the special illumination effect
- Superior sound quality with Magnetic Fluid Speakers, glass fibre unit, wireless rear speaker, 5.1 channel system surround experience
- Stylish and modern Quartz design with flexible layout (3-way setting)
- Enjoy media seamlessly from smartphone with NFC and Bluetooth® connectivity
- Built-in Wi-Fi gives you access to a wide variety of videos, music, movies and sports footage via Sony Entertainment Network (SEN)
- India Sound Setting - More Louder, More Bass, More Clear



## Excellent performance in a streamlined design



### BDV-N7100W

- Superior sound quality with Magnetic Fluid Speakers, glass fibre unit, wireless rear speaker, 5.1 channel system surround experience
- Streamlined, space-efficient and stylish Quartz design
- Enjoy media seamlessly from smartphone with NFC & Bluetooth® connectivity
- Built-in Wi-Fi gives you access to a wide variety of videos, music, movies and sports footage via Sony Entertainment Network (SEN)
- India Sound Setting - More Louder, More Bass, More Clear





A new world of home entertainment



Takes home entertainment to the next level



BDV-E4100

- Good sound quality, 5.1 channel system
- Enjoy music seamlessly with full connectivity from smartphone via NFC and Bluetooth® connectivity
- A wide variety of videos, music, movies and sports footage via Sony Entertainment Network (SEN)
- India Sound Setting - More Louder, More Bass, More Clear



BDV-E3100

- Good sound quality, 5.1 channel system
- Enjoy music seamlessly with full connectivity from smartphone via NFC and Bluetooth® connectivity
- A wide variety of videos, music, movies and sports footage via Sony Entertainment Network (SEN)
- India Sound Setting - More Louder, More Bass, More Clear



High performance in streamlined design

DAV-DZ350

- Superior sound quality, high power output, 5.1 channel system
- Stylish Quartz design
- Enjoy music seamlessly from smartphone with Bluetooth® connectivity
- Enjoy singing with the Karaoke feature
- India Sound Setting - More Louder, More Bass, More Clear



Total Output Power  
1000W  
Powerful Sound Quality



DAV-TZ215

- HDMI Output (Upscale 1080p for DVD)
- 1080p Upscaling for DVD Playback
- USB Music/Movie Playback (Xvid home and MPEG-4 Simple Profile)
- Function: DVD/CD, FM Tuner, TV/Audio In, USB



Total Output Power  
600W  
Powerful Sound Quality



DAV-TZ145

- HDMI Output (Upscale 1080p for DVD)
- 1080p Upscaling for DVD Playback
- USB Music/Movie Playback (Xvid home and MPEG-4 Simple Profile)
- Function: DVD/CD, FM Tuner, TV/Audio In, USB



Total Output Power  
360W  
Powerful Sound Quality



Enhance your BRAVIA experience with Home Entertainment Solutions

BRAVIA Series

Goes best with

Also available

X9004A

SERIES

BDV-N9100W



BDV-N7100W



W950A

SERIES

BDV-N9100W



BDV-N7100W



W900A

SERIES

BDV-N9100W



BDV-N7100W



W850A

SERIES

BDV-N7100W



BDV-E4100



W700A

SERIES

BDV-E4100



BDV-E3100



W670A

W650A

W600A

SERIES

BDV-E3100



DAV-DZ350



R452A

R422A

R402A

SERIES

DAV-TZ215



DAV-TZ145





# SONY

make.believe



[www.sony.co.in](http://www.sony.co.in)

Make sure it's a Sony.  
Insist on your Sony India Warranty Card



**BRAVIA**  
**2 YEAR**  
EXTENDED  
WARRANTY  
\*sold separately

**FREE**  
**Home Wall Mounting**  
with BRAVIA



Scan the QR Code &  
experience BRAVIA like  
never before

For sales and service queries, call **1800-103-7799** (Toll Free from all landline & mobile phones) or e-mail us at [sonyindia.care@ap.sony.com](mailto:sonyindia.care@ap.sony.com)

Please write to [b2bindia@ap.sony.com](mailto:b2bindia@ap.sony.com) for corporate enquiries.

While efforts have been made to provide accurate information, there could be printing errors, which may have crept in. In the event of any discrepancy, the Product Operating Instructions supplied with product shall be the authentic reference point.

\*MRP inclusive of all taxes. Quoted MRP is for 1 unit of the product. MRP subject to change without any prior notice. Kindly check with your nearest dealer for updated MRP.

