

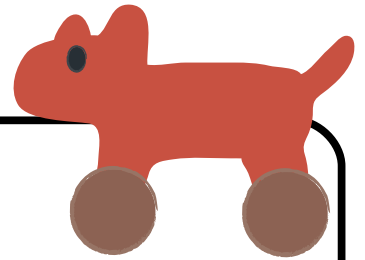
Name: \_\_\_\_\_

Time to the Quarter Hour

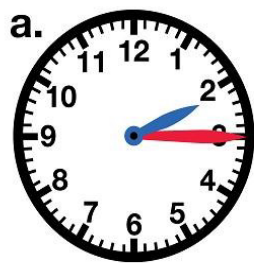
ANSWER KEY

# Telling Time

To the Nearest Quarter Hour

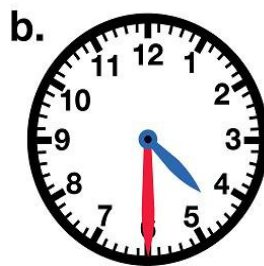


Write the time shown on each clock. Write it the “regular way” and the “smart way.” The first one has been done for you.



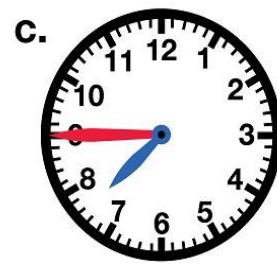
2:15

Quarter after 2



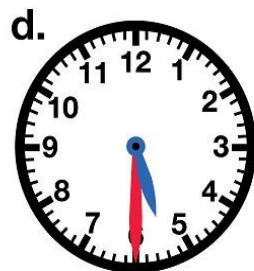
4:30

Half Past 4



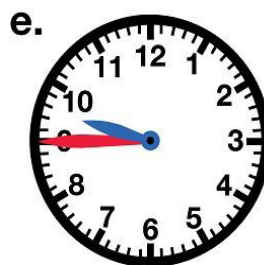
7:45

Quarter to 8



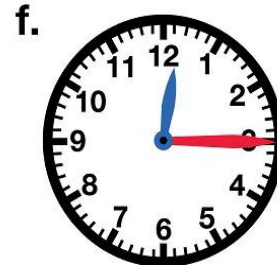
5:30

Half Past 5



9:45

Quarter to 10



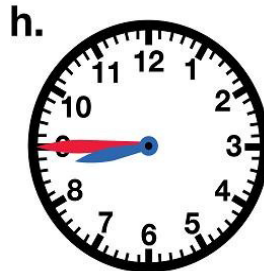
12:15

Quarter After 12



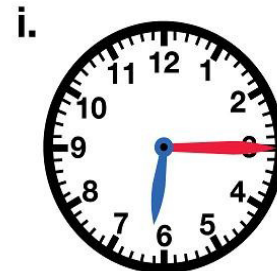
1:45

Quarter to 2



8:45

Quarter to 9



6:15

Quarter After 6